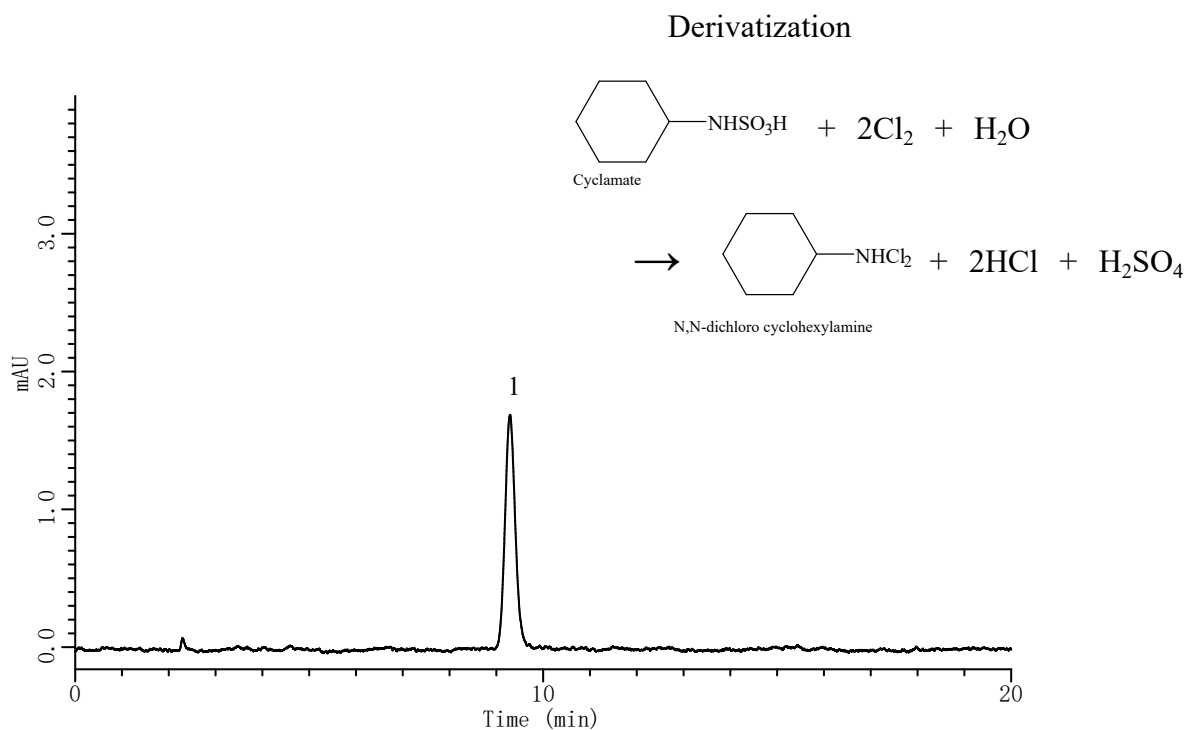


InertSearch™ for LC

Inertsil® Applications

Analysis of Cyclamate with pre-column derivatization

Data No. LA723-0811



Conditions

System : GL-7400HPLC system
Column : Inertsil ODS-3 (5µm, 150 x 4.6 mm I.D.)
Column Cat. No. : 5020-01731
Eluent : A) CH₃CN
 : B) H₂O
 : A/B = 70/30, v/v
Flow Rate : 1.0 mL/min
Col. Temp. : 40 °C
Detection : UV 314 nm (GL-7450 UV detector)
Injection Vol. : 10 µL

Analyte

1. N,N-dichloro cyclohexylamine (10 mg/L)