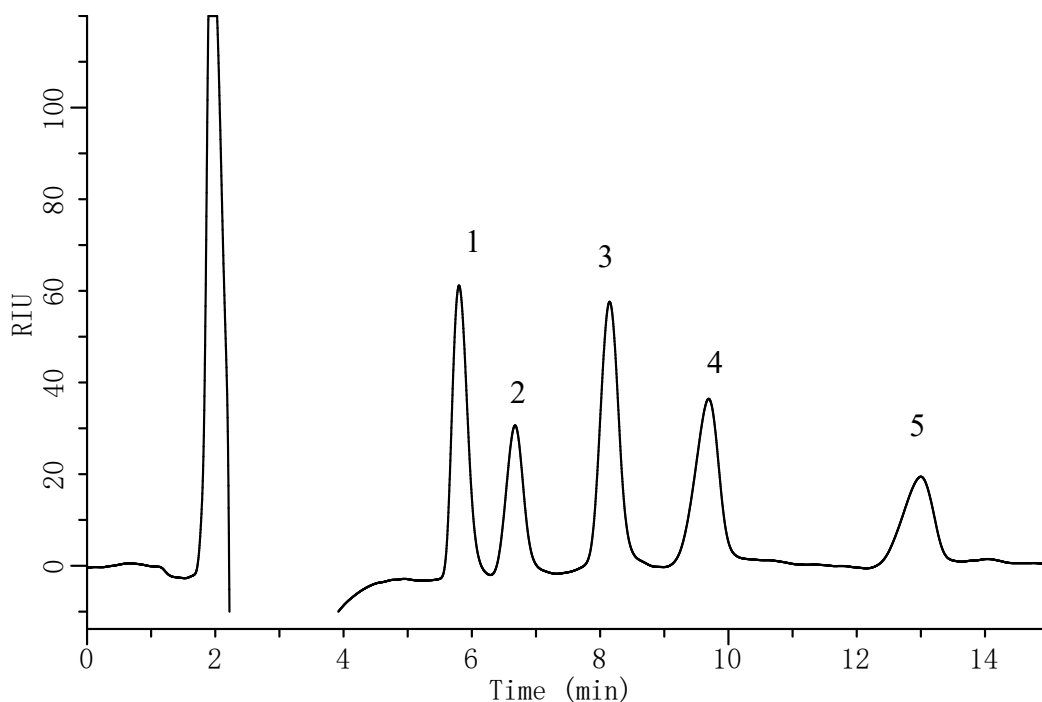


# InertSearch™ for LC

Inertsil® Applications

## Analysis of Sugars (Using of THF as mobile phase)

Data No. LA734-0811



### Conditions

**System** : GL-7400 system  
**Column** : Inertsil NH2 (3 $\mu$ m, 150  $\times$  3.0 mm I.D.)  
**Column Cat. No.** : 5020-05475  
**Eluent** : A) THF  
          B) H<sub>2</sub>O  
          A/B = 80/20, v/v  
**Flow rate** : 0.4 mL/min.  
**Col. Temp.** : 40 °C  
**Detection** : RI(40°C, Positive) (GL-7454 RI detector)  
**Injection Vol.** : 20 $\mu$ L

### Analyte

1. Fructose 10000 mg/L  
2. Glucose 10000 mg/L  
3. Sucrose 10000 mg/L  
4. Maltose 10000 mg/L  
5. Lactose 10000 mg/L