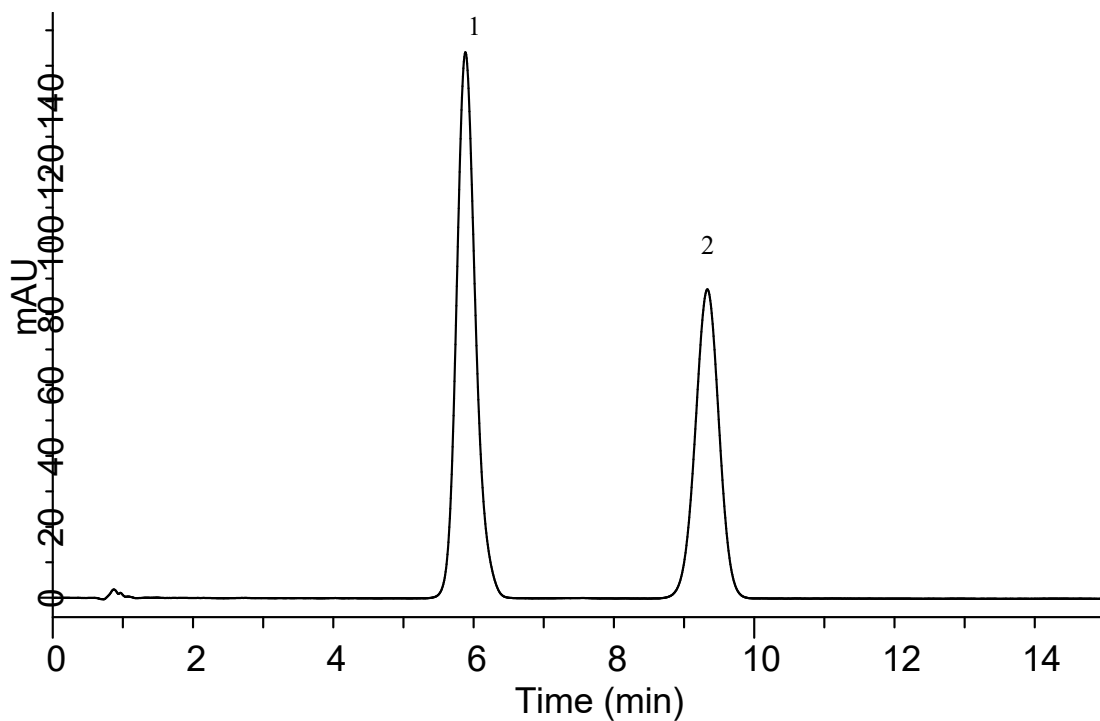


InertSearch™ for LC

Inertsil® Applications

Analysis of Drugs

Data No. LA757-0696



Conditions

System : GL-7400 HPLC System
Column : Inertsil ODS (10 μ m, 150 x 4.0 mm I.D.)
Column Cat. No. : 5020-02201
Eluent : 2.88 g/L Sodium lauryl sulfate (SLS) in
[CH₃CN / 0.02 M NaH₂PO₄ (pH 3.0, H₃PO₄) = 9/11, v/v]
Flow Rate : 1.4 mL/min.
Col. Temp. : 25 °C
Detection : UV 254 nm (GL-7450 UV Detector)

Analyte

1. Lidocaine
2. Benzophenone