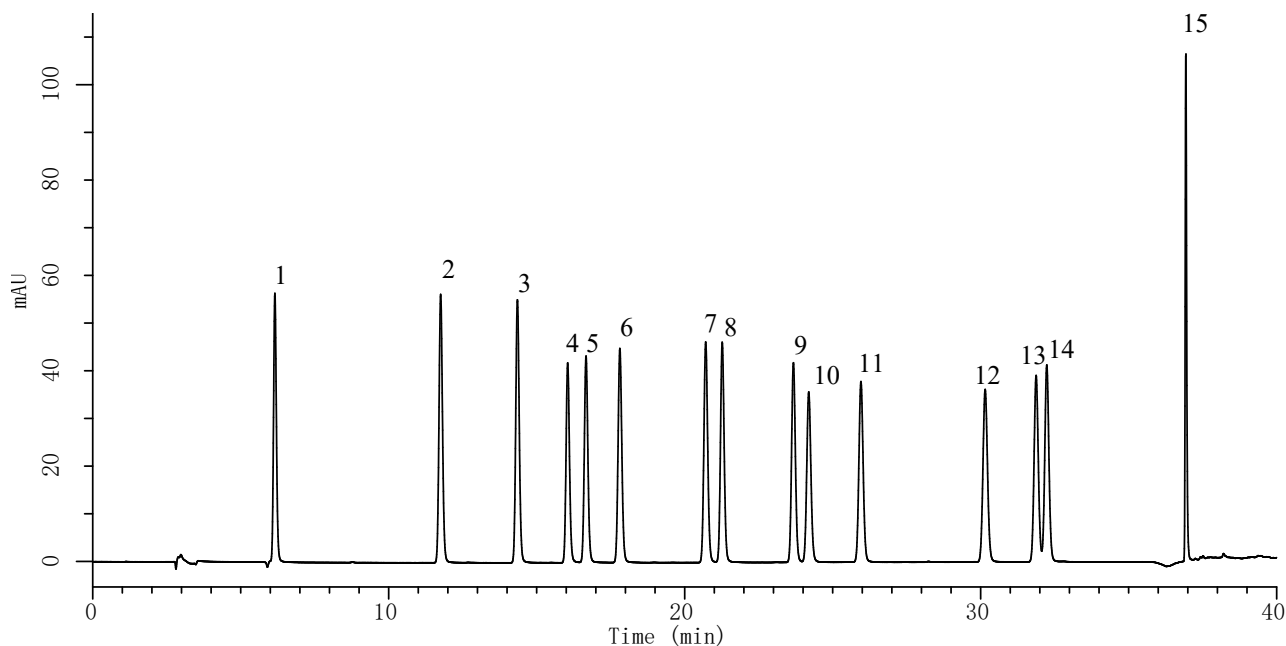


InertSearch™ for LC

Inertsil® Applications

Analysis of 15 Sulfa drugs

Data No. LA758-0626



Conditions

System : GL-7400 HPLC system
Column : Inertsil Sulfa C18 (3 μ m, 150 x 4.6 mm I.D.)
Column Cat. No. : 5020-07535
Eluent : A) CH₃CN/CH₃COOH = 777.66/3.15, w/w
B) CH₃COOH/H₂O = 3.15/997, w/w
A/B = 0/100 -33min- 33/67 -3min- 90/10 -4min- 90/10, v/v
Flow Rate : 1.0 mL/min
Col. Temp. : 40 °C
Detection : UV 270 nm (GL-7452A PDA Detector)
Injection Vol. : 10 μ L

Analyte

1.	Sulfanilamide	(10 mg/L)
2.	Sulfacetamide	(10 mg/L)
3.	Sulfadiazine	(10 mg/L)
4.	Sulfathiazole	(10 mg/L)
5.	Sulfapyridine	(10 mg/L)
6.	Sulfamerazine	(10 mg/L)
7.	Sulfadimidine	(10 mg/L)
8.	Sulfamethoxyypyridazine	(10 mg/L)
9.	Sulfamonomethoxin	(10 mg/L)
10.	Sulfachlorpyridazine	(10 mg/L)
11.	Sulfamethoxazole	(10 mg/L)
12.	Sulfabenzamide	(10 mg/L)
13.	Sulfadimethoxine	(10 mg/L)
14.	Sulfaquinoxaline	(10 mg/L)
15.	Sulfanitran	(10 mg/L)