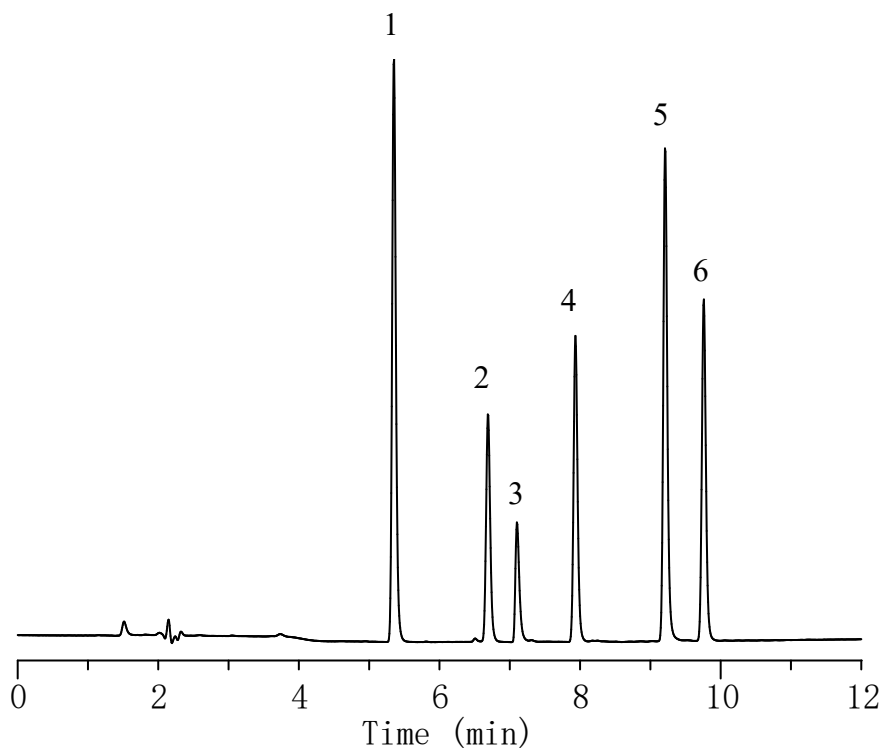


# InertSearch™ for LC

Inertsil® Applications

## Analysis of 6 Sulfa drugs (I)

Data No. LA759-0626



### Conditions

**System** : GL-7400 HPLC system  
**Column** : Inertsil Sulfa C18 (3 $\mu$ m, 150 x 4.6 mmI.D.)  
**Column Cat. No.** : 5020-07535  
**Eluent** : A) CH<sub>3</sub>CN/ H<sub>2</sub>O /CH<sub>3</sub>COOH = 10/90/0.3, v/v/v  
B) CH<sub>3</sub>CN/ H<sub>2</sub>O /CH<sub>3</sub>COOH = 60/40/0.3, v/v/v  
A/B = 100/0 -10 min- 0/100 -10 min- 0/100, v/v  
**Flow Rate** : 1.0 mL/min  
**Col. Temp.** : UV 265 nm (GL-7452A PDA Detector)  
**Detection** : 40 °C  
**Injection Vol.** : 10  $\mu$ L

### Analyte

Standard samples I  
1. Clopidol (5 mg/L)  
2. Sulfamerazine (2 mg/L)  
3. Morantel citrate (5 mg/L)  
4. Sulfamonomethoxin (3 mg/L)  
5. Oxolicnic acid (2 mg/L)  
6. Sulfadimethoxine (3 mg/L)