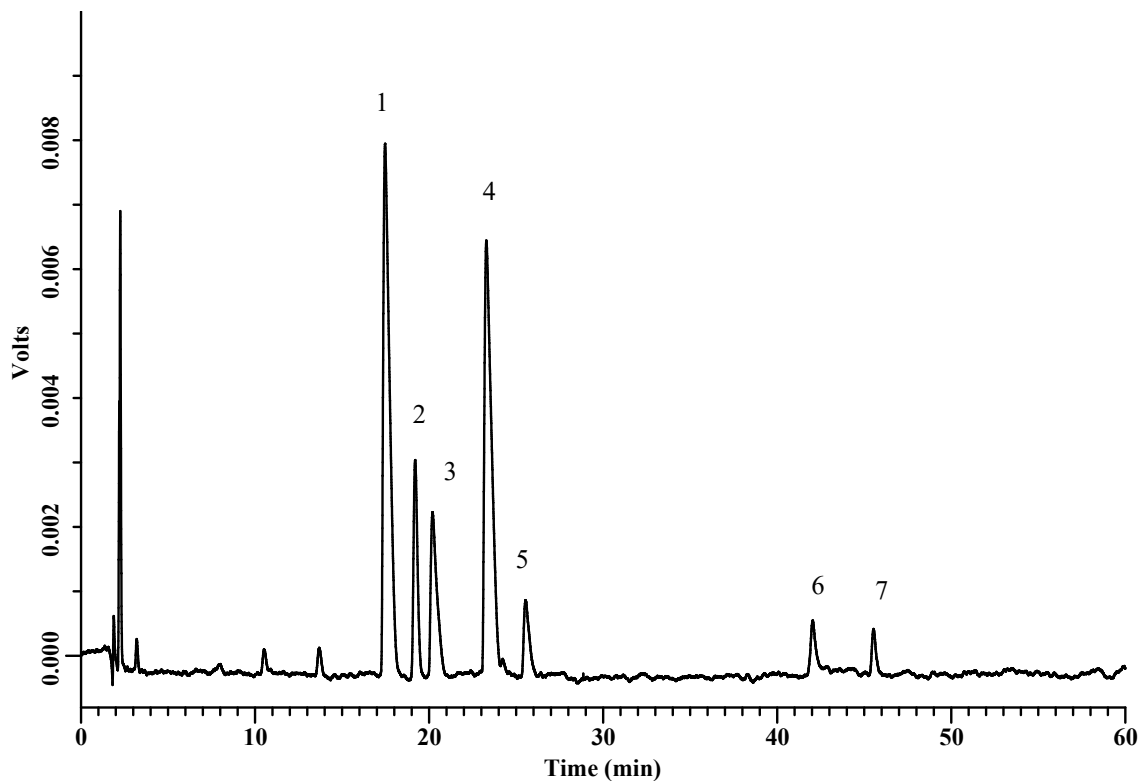


InertSearch™ for LC

Inertsil® Applications

Analysis of Peptides and proteins (WP300 C18)

Data No. LA770-0000



Conditions

Column : Inertsil WP300 C18 (5µm, 150 x 4.6 mm I.D.)
Column Cat. No. : 5020-05845
Eluent : A) 0.05 % HCOOH in (CH₃CN/H₂O = 90/10, v/v)
 : B) 0.05 % HCOOH
 : A/B = 10/90 – 60 min. – 40/60, v/v
Flow Rate : 2.0 mL/min
Col. Temp. : 30 °C
Detection : UV 254 nm

Analyte

- | | |
|-------------------------|--|
| 1. Methionin Enkephalin | (FW 574, Tyr-Gly-Gly-Phe-Met) |
| 2. Oxytocin | (FW 1,007, Cys-Tyr-Ile-Gln-Asn-Cys-Pro-Leu-Gly-NH ₂) |
| 3. AngiotensinII | (FW 1,032, Asp-Arg-Val-Tyr-Ile-His-Pro-Phe) |
| 4. Leucin Enkephalin | (FW 556, Tyr-Gly-Gly-Phe-Leu) |
| 5. AngiotensinI | (FW 1,297, Asp-Arg-Val-Tyr-Ile-His-Pro-Phe-His-Leu) |
| 6. Insulin | (FW 6,000) |
| 7. Insulin Chain B | (FW 3,496) |