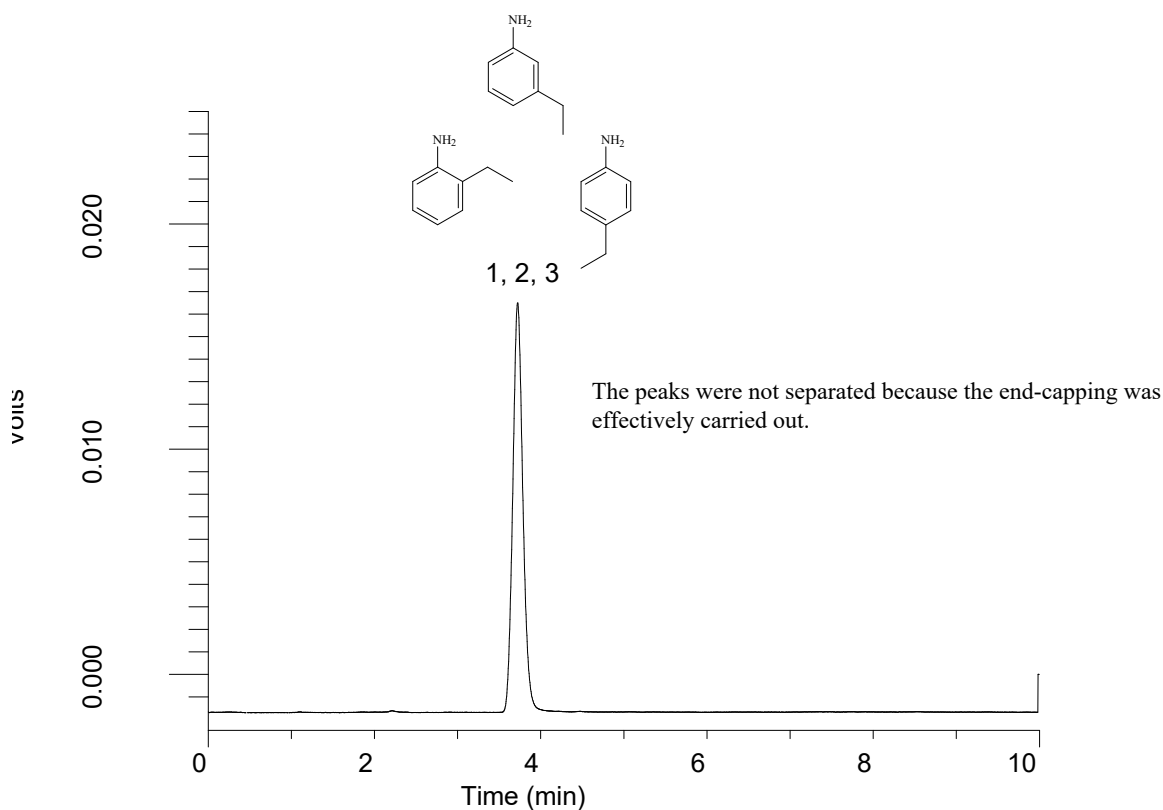


InertSearch™ for LC

Inertsil® Applications

Analysis of Ethylanilines (WP300 C18)

Data No. LA771-0000



Conditions

Column : Inertsil WP300 C18 (5 μ m, 150 x 4.6 mm I.D.)
Column Cat. No. : 5020-05845
Eluent : A) CH₃OH
B) H₂O
A/B = 49/51, v/v
Flow Rate : 1.0 mL/min
Col. Temp. : 40 °C
Detection : UV 254 nm

Analyte

1. 2-Ethylaniline
2. 3-Ethylaniline
3. 4-Ethylaniline