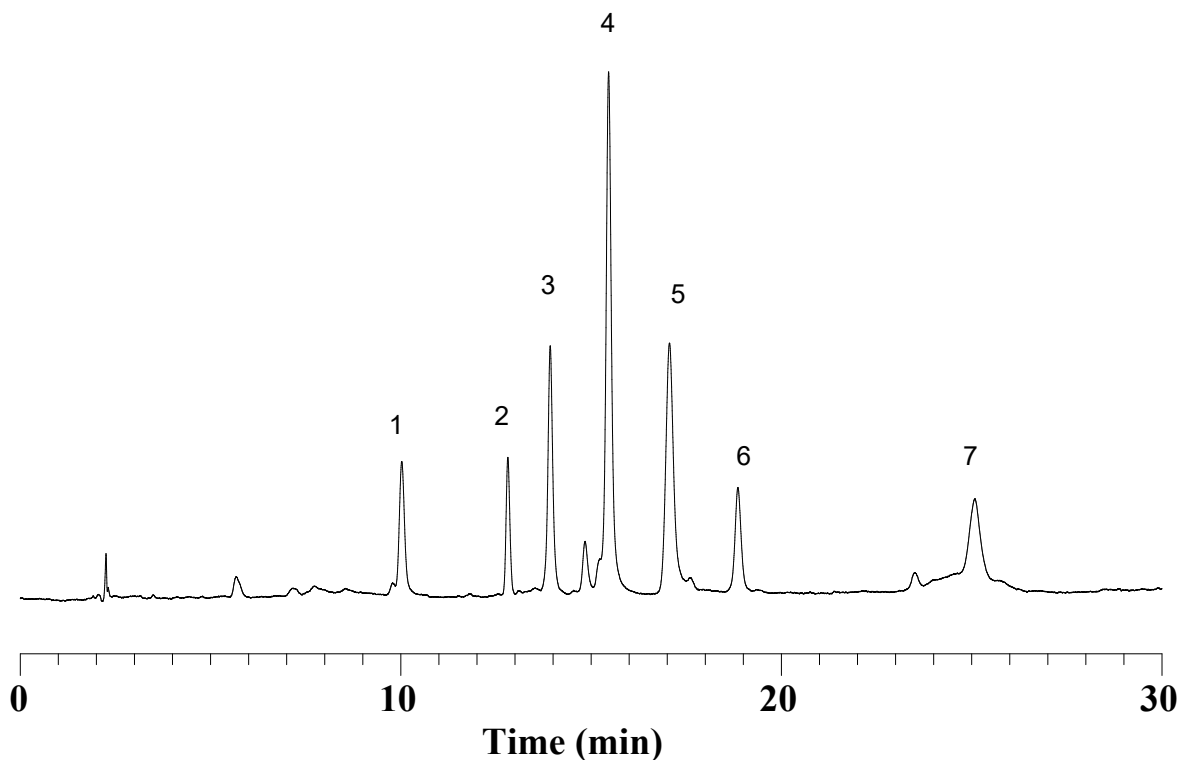


# InertSearch™ for LC

Inertsil® Applications

## Analysis of Peptides and proteins (WP300 C8)

Data No. LA774-0000



### Conditions

**Column** : Inertsil WP300 C8 (5 µm, 150 x 4.6 mm I.D.)  
**Column Cat. No.** : 5020-05745  
**Eluent** : A) 0.1 % TFA in (CH<sub>3</sub>CN/0.1 % TFA = 90/10, v/v)  
          : B) 0.1 % TFA  
          : A/B = 20/80 – 25 min – 60/40 – 5 min – 60/40, v/v  
**Flow Rate** : 1.0 mL/min  
**Col. Temp.** : 30 °C  
**Detection** : UV 280 nm

### Analyte

1. Ribonuclease A (FW 13,700)  
2. Insulin (FW 6,000)  
3. Cytochrome C (FW 13,000)  
4. Lysozyme (FW 14,000)  
5. BSA (FW 66,000)  
6. STI (FW 21,000)  
7. Ovalbumin (FW 45,000)