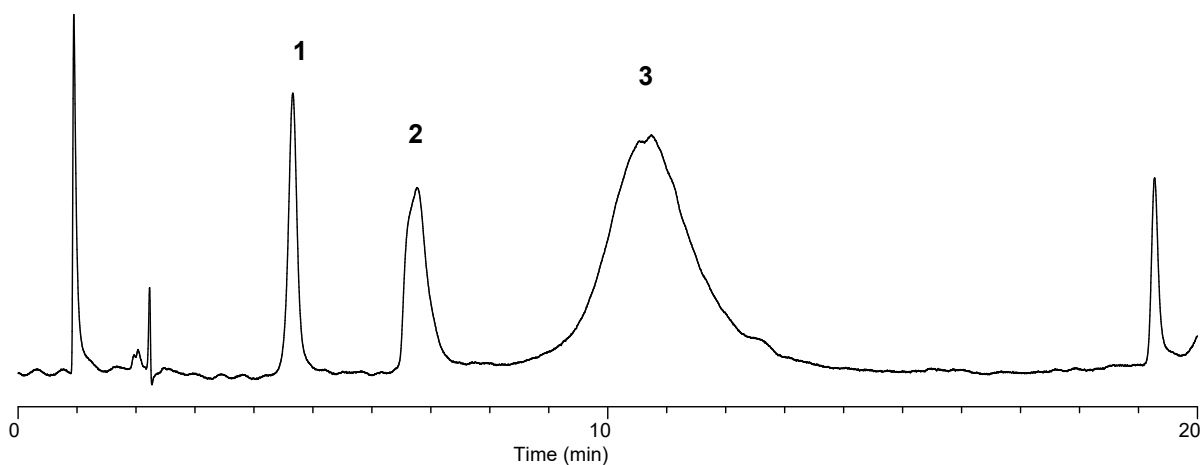


# InertSearch™ for LC

Inertsil® Applications

## Analysis of Peptides and proteins (WP300 C4)

Data No. LA776-0000



### Conditions

**Column** : Inertsil WP300 C4 (5 µm, 150 x 4.6 mm I.D.)  
**Column Cat. No.** : 5020-05895  
**Eluent** : A) 0.2 % HCOOH in (CH<sub>3</sub>CN/H<sub>2</sub>O = 90/10, v/v)  
          : B) 0.2 % HCOOH  
          : A/B = 20/80 – 20 min – 80/20, v/v  
**Flow Rate** : 1.0 mL/min  
**Col. Temp.** : 30 °C  
**Detection** : UV 280 nm

### Analyte

1. Cytochrome C (FW 12,000)  
2. BSA (FW 66,000)  
3. Ferritin (FW 440,000)