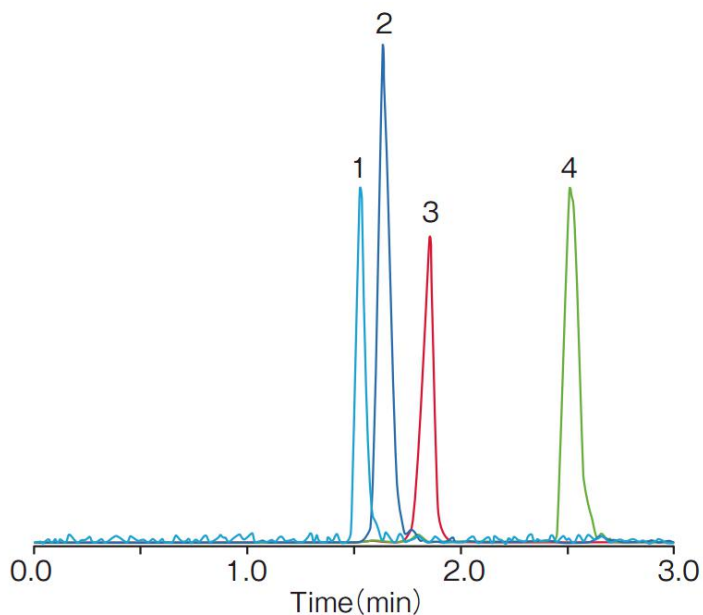


# InertSearch™ for LC

Inertsil® Applications

## Analysis of 4 Drugs

Data No. LA777-0000



### Conditions

**Column** : Inertsil ODS-3 (3 µm, 100 x 2.1 mm I.D.)

**Column Cat. No.** : 5020-04414

**Eluent** : A) CH<sub>3</sub>CN  
B) 0.1 % IPCC-MS3 in H<sub>2</sub>O  
A/B = 30/70, v/v

IPCC-MS3 : ion pair reagent for LC/MS (Cat. No. 5040-31700, 1 g)

**Flow Rate** : 0.2 mL/min

**Col. Temp.** : 40 °C

**Detection** : LC/MS/MS (ESI, Positive, MRM)

**Injection Vol.** : 10 µL

### Analyte

1. Cimetidine	Q1:253	Q3:95	(20 µg/L)
2. Procainamide	Q1:236	Q3:163	(20 µg/L)
3. Ranitidine	Q1:315	Q3:176	(20 µg/L)
4. Pindolol	Q1:249	Q3:116	(20 µg/L)