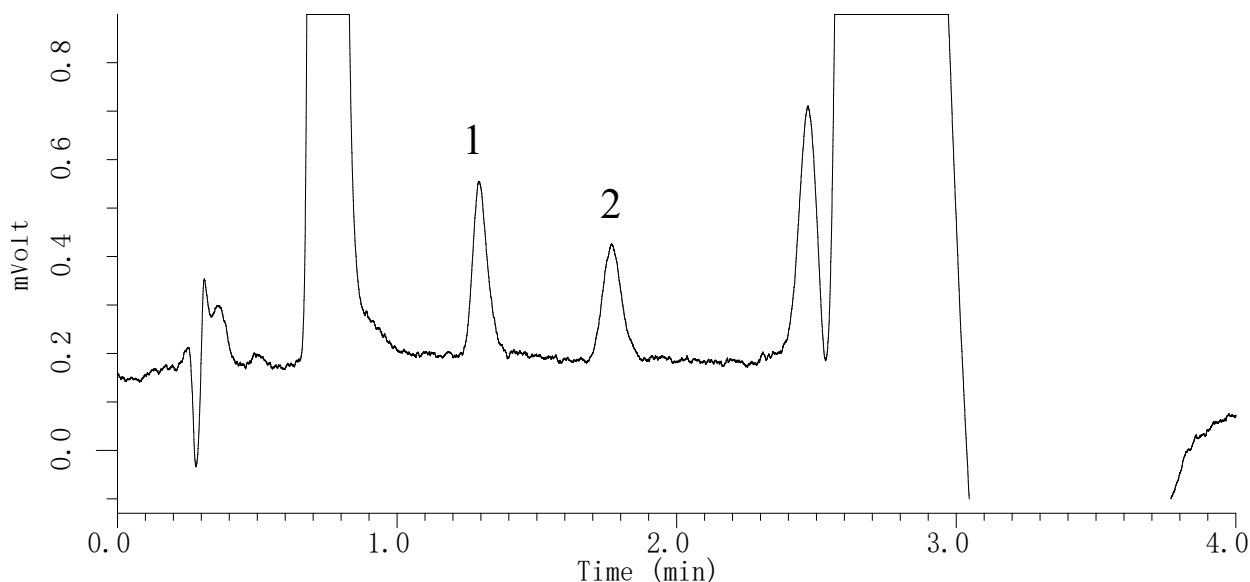


# InertSearch™ for LC

Inertsil® Applications

## Rapid analysis of DNPH-aldehydes (4 min)

Data No. LA781-0871



### Conditions

**System** : LC800 HPLC System  
**Column** : Inertsil ODS-4 (2 $\mu$ m, 75 x 2.1 mm I.D.)  
**Column Cat. No.** : 5020-81203  
**Eluent** : A) CH<sub>3</sub>CN  
          B) H<sub>2</sub>O  
          A/B = 50/50 – 1.9 min – 50/50 – 0.1 min – 95/5 – 0.7 min  
          – 95/5 – 0.1 min – 50/50 – 1.2 min – 50/50, v/v

**Flow rate** : 0.6 mL/min

**Col. Temp.** : 40 °C

**Detection** : UV 360 nm (10 mm UV cell, Response 0.5 sec)

**Injection Vol.** : 5  $\mu$ L (No Waste Pickup)

**Sample** : DNPH-derivatives of 13 aldehydes in CH<sub>3</sub>CN

### Analyte:

1. DNPH-Formaldehyde (5  $\mu$ g/L)  
2. DNPH-Acetaldehyde (5  $\mu$ g/L)

Reference : LC technical note 22 and 31,  
[LA318](#), [LA403](#), [LA405](#), [LA406](#), [LA580](#), [LA594](#), [LA595](#), [LA596](#)