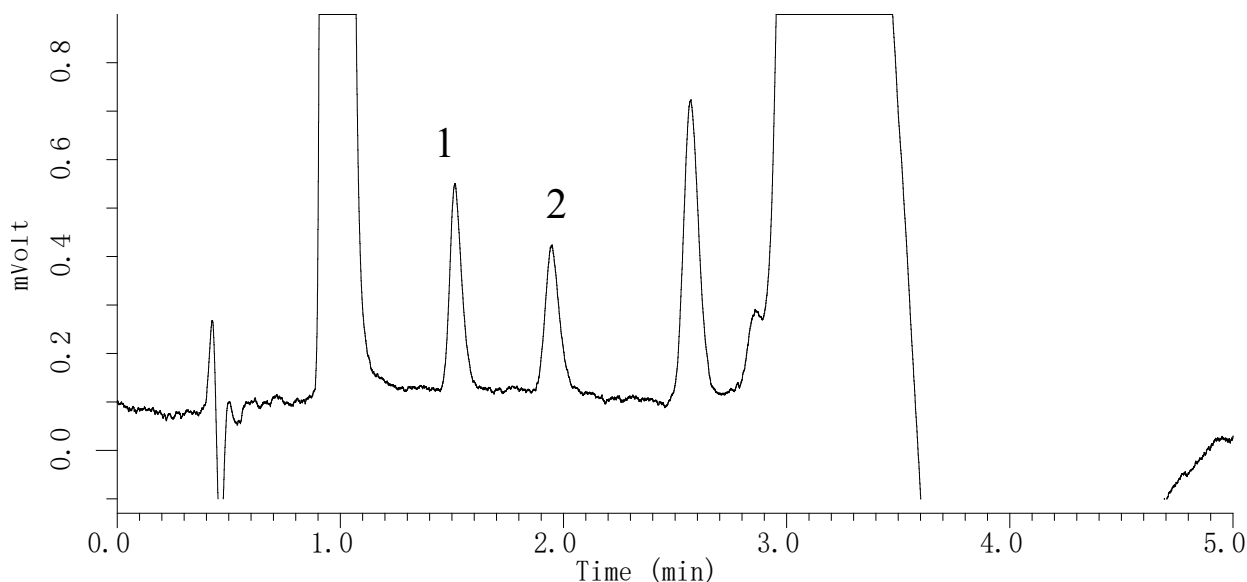


InertSearch™ for LC

Inertsil® Applications

Rapid analysis of DNPH-aldehydes (5 min)

Data No. LA782-0871



Conditions

System : LC800 HPLC System
Column : Inertsil ODS-4 (2µm, 100 x 2.1 mm I.D.)
Column Cat. No. : 5020-81204
Eluent : A) CH₃CN
 B) H₂O
 A/B = 55/45 – 2.2 min – 55/45 – 0.1 min – 95/5 – 1.1 min
 – 95/5 – 0.1 min – 55/45 – 1.5 min – 55/45, v/v

Flow rate : 0.5 mL/min

Col. Temp. : 40 °C

Detection : UV 360 nm (10 mm UV cell, Response 0.5 sec)

Injection Vol. : 5 µL (No Waste Pickup)

Sample : DNPH-derivatives of 13 aldehydes in CH₃CN

Analyte:

1. DNPH-Formaldehyde (5 µg/L)
2. DNPH-Acetaldehyde (5 µg/L)

Reference : LC technical note 22 and 31,

LA318, LA403, LA405, LA406, LA580, LA594, LA595, LA596