

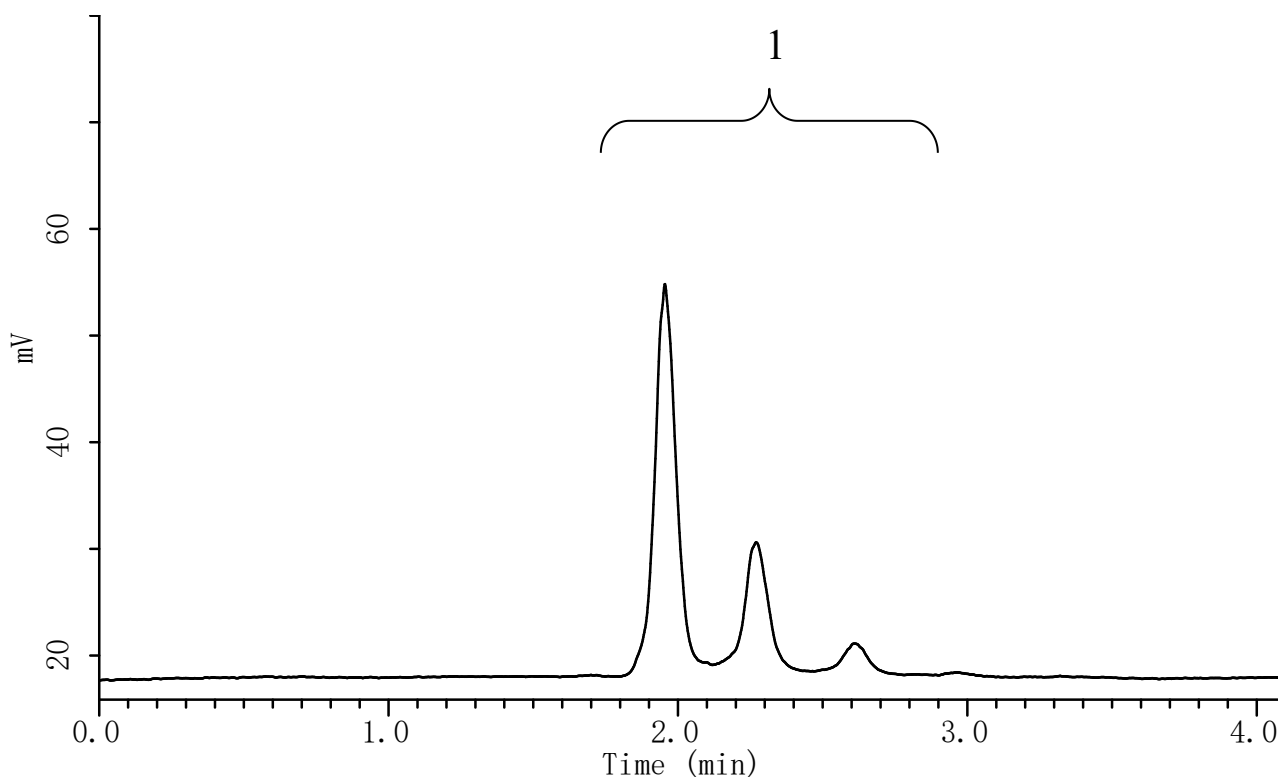
InertSearch™ for LC

Inertsil® Applications

Analysis of Phosphatidylcholine by HPLC-ELSD

Data No. LA789-0696

ELSD



Conditions

System : LC800 HPLC system
Column : Inertsil ODS-4 (2 μ m, 50 x 3.0 mm I.D.)
Column Cat. No. : 5020-81212
Eluent : A) 2-Propanol
 : B) 0.05 % TFA
 : A/B = 75/25 – 3.5 min – 90/10 – 0.5 min – 90/10, v/v
Flow rate : 0.6 mL/min
Col. Temp. : 50 °C
Detection : ELSD (SofTA ELSD Model300S)
Injection Vol. : 2 μ L
Sample : Compound lipid (Sphingophospholipid)

Analyte:

1. Phosphatidylcholine (PC) 1000 mg/L