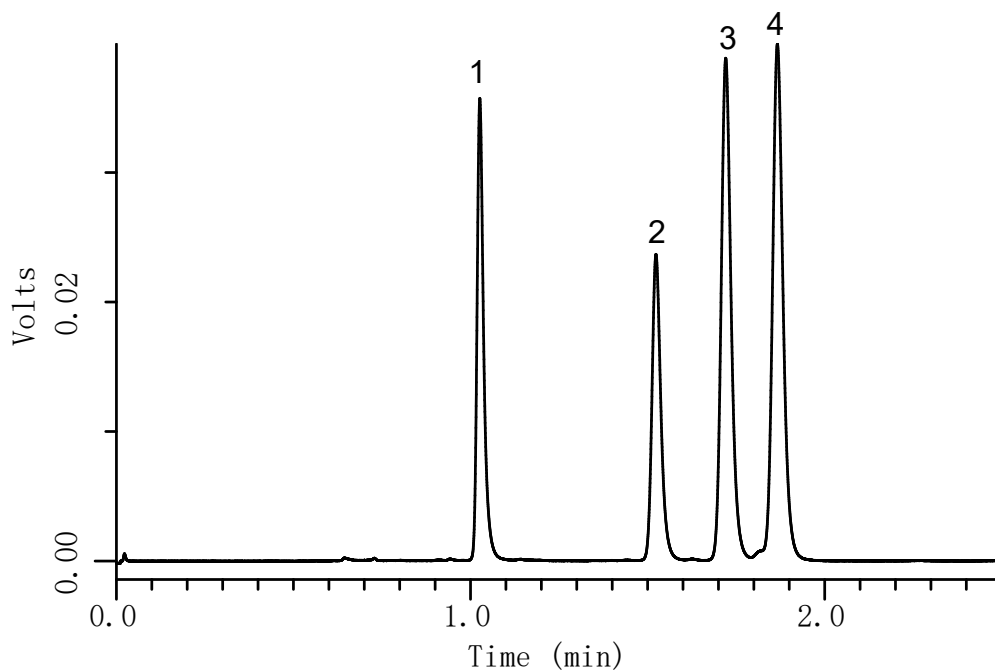


# InertSearch™ for LC

Inertsil® Applications

## Analysis of Estrogen

Data No. LA822-0699



### Conditions

**Column** : MonoClad C18-HS (150 x 3.0 mm I.D.)

**Column Cat. No.** : 5020-10803

**Eluent** : A) CH<sub>3</sub>CN  
B) H<sub>2</sub>O  
A/B = 50/50, v/v

**Flow Rate** : 1 mL/min

**Col. Temp.** : 40 °C

**Detection** : UV 220 nm

**Injection Vol.** : 1 µL

### Analyte

1. Estriol (0.05 mg/mL)

2. Estradiol (0.05 mg/mL)

3. Ethynylestradiol (0.1 mg/mL)

4. Estrone (0.05 mg/mL)