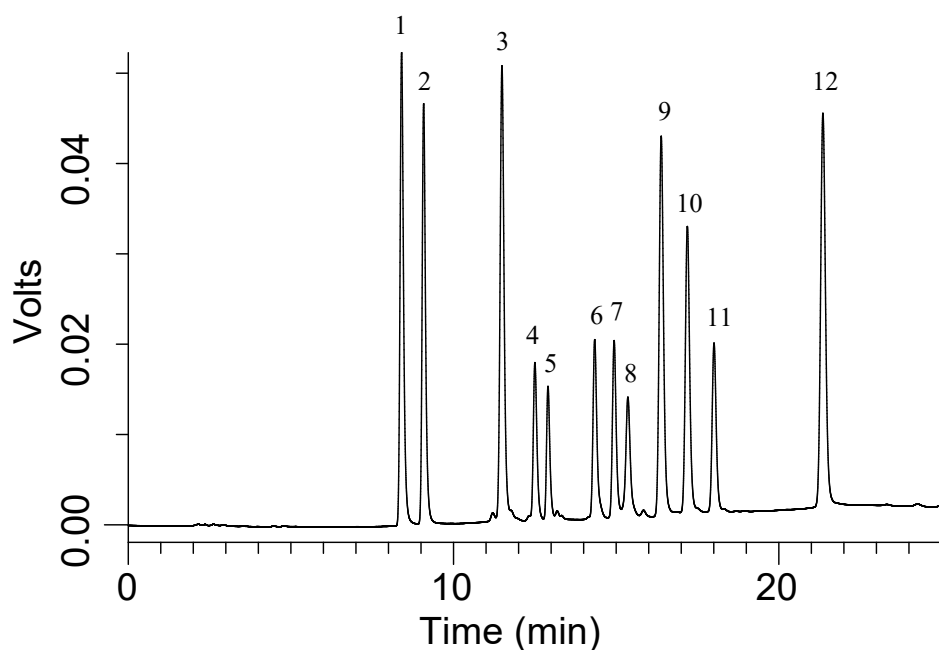


InertSearch™ for LC

Inertsil® Applications

Analysis of Isoflavones

Data No. LA838-0700



Conditions

System : AccuStream Capillary HPLC system
Column : MonoCap C18 WideBore (250 x 0.5 mm I.D.)
Column Cat. No. : 5020-10200
Eluent : A) 0.1 % CH₃COOH in CH₃CN
 : B) 0.1 % CH₃COOH in H₂O
 : A/B = 10/90 - 20 min - 30/70 - 5 min - 30/70, v/v
Flow rate : 25 µL/min
Col. Temp. : Ambient
Detection : UV 210 nm (MU701 18 nl cell)
Injection Vol. : 5 µL
Analyte : Isoflavone mixture

Solutes:

1.	Daidzin	(2.5 mg/L)
2.	Glycitin	(2.5 mg/L)
3.	Grenistin	(2.5 mg/L)
4.	6''-O-Malonyldaizin	(2.5 mg/L)
5.	6''-O-Malonylglycitin	(2.5 mg/L)
6.	6''-O-Acetyldaizin	(2.5 mg/L)
7.	6''-O-Acetylglycitin	(2.5 mg/L)
8.	6''-O-Malonylgenistin	(2.5 mg/L)
9.	Daizein	(2.5 mg/L)
10.	Glycitein	(2.5 mg/L)
11.	6''-O-Acetylgenistin	(2.5 mg/L)
12.	Genistein	(2.5 mg/L)