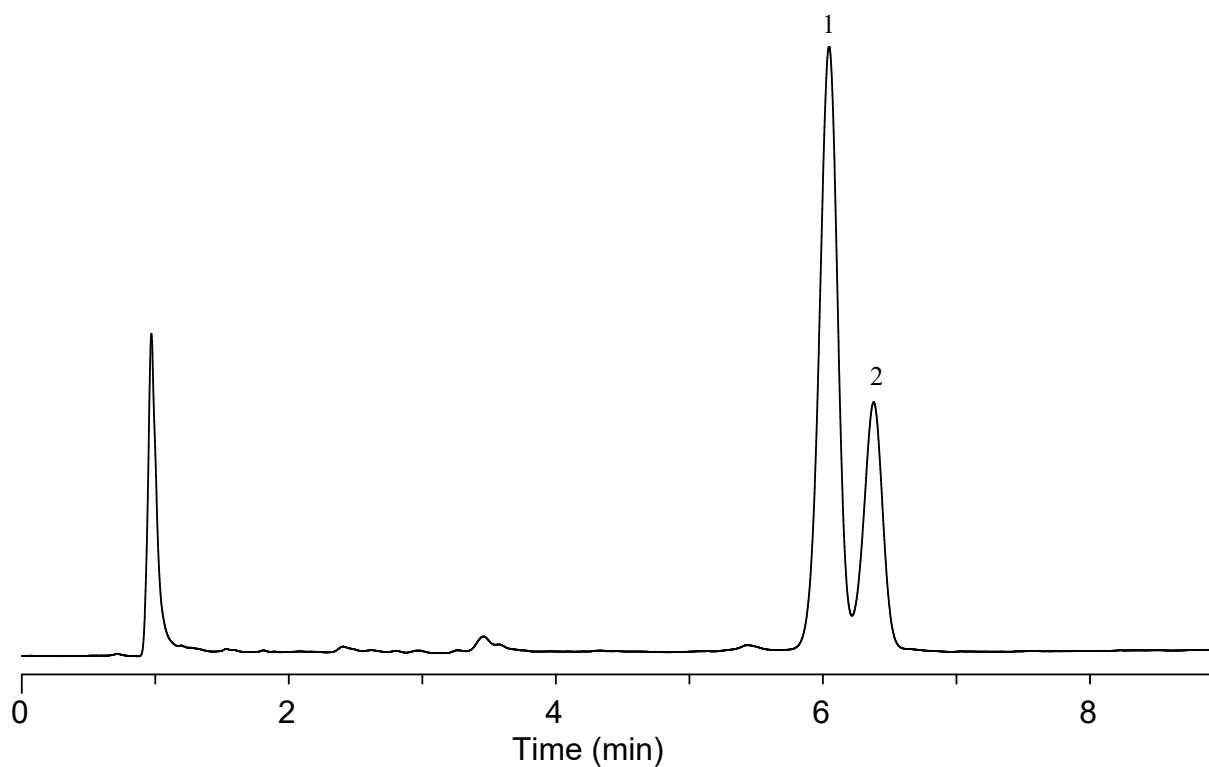


# InertSearch™ for LC

Inertsil® Applications

## Analysis of Carotene

Data No. LA853-0784



### Conditions

**Column** : Monoclad C18-HS (150 x 3.0 mm I.D.)  
**Column Cat. No.** : 5020-10803  
**Eluent** : CH<sub>3</sub>OH  
**Flow Rate** : 1 mL/min  
**Col. Temp.** : UV 455 nm  
**Detection** : 40 °C  
**Injection Vol.** : 2 µL  
**Sample** : Carotene

### Analyte:

1. α- Carotene  
2. β- Carotene