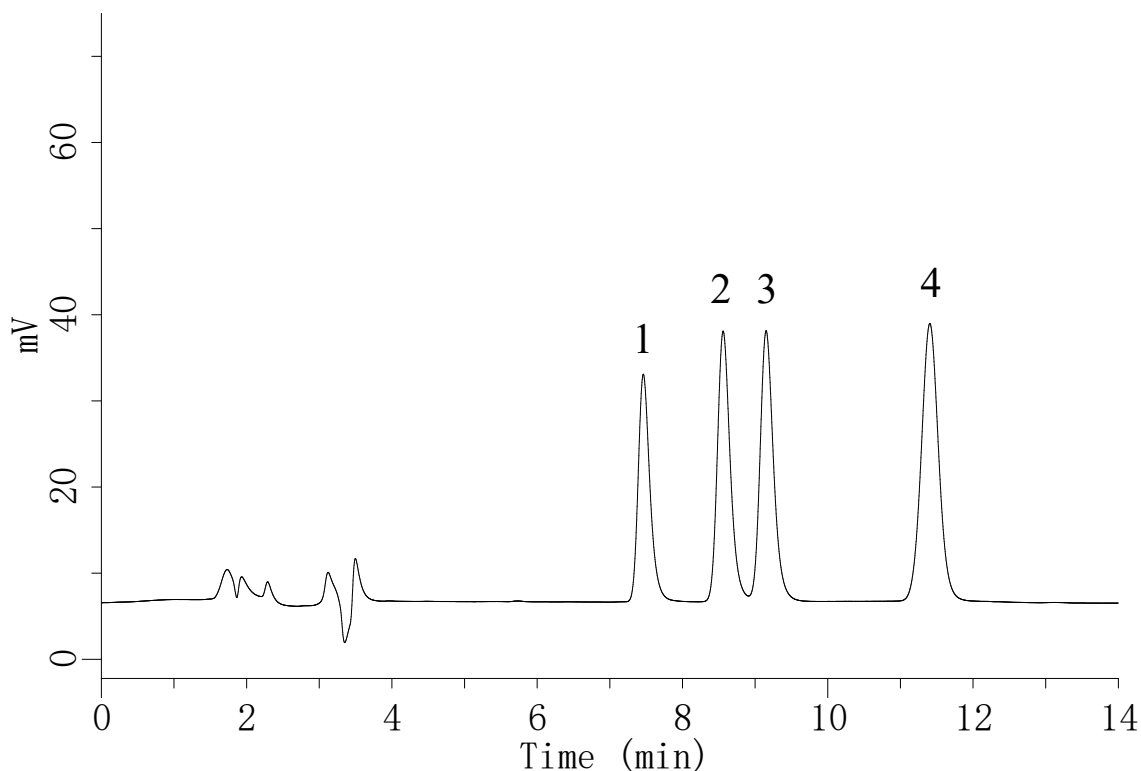


InertSearch™ for LC

Inertsil® Applications

Analysis of Catecholamines

Data No. LA857-0871



Conditions

System : LC700 HPLC system
Column : Inertsil ODS-4 (5 μ m, 250 x 3.0 mm I.D.)
Column Cat. No. : 5020-03926
Eluent : A) CH₃CN
B) 20 mM Sodium acetate + 20 mM citric acid
+ 1 g/L IPCC-08 in water
(IPCC-08 : Sodium 1-Octane sulfonate)
A/B = 16/100, v/v (Premix)
Flow rate : 0.5 mL/min
Col. Temp. : 35°C
Detection : ECD 800 mV vs. Ag/AgCl (ED703 ECDetector , Diamond)
Injection Vol. : 20 μ L
Sample : Catecholamines

Analyte:

1. Norepinephrine (100 μ g/L)
2. Epinephrine (100 μ g/L)
3. 3,4-Dihydroxybenzylamine (100 μ g/L)
4. Dopamine (100 μ g/L)