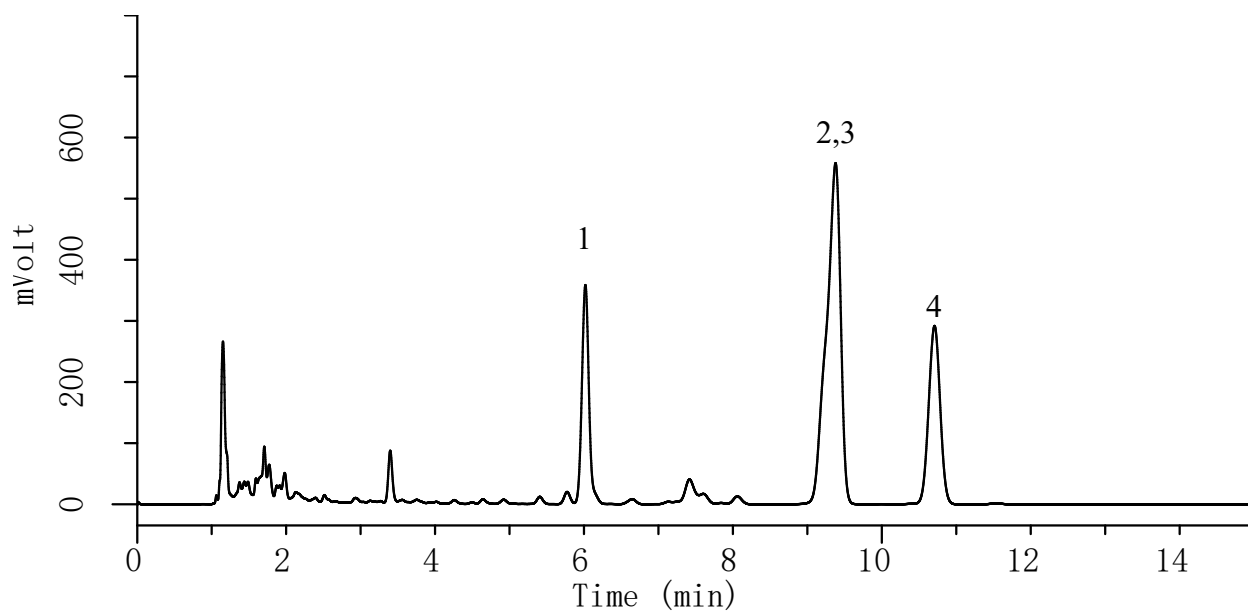


InertSearch™ for LC

Inertsil® Applications

Analysis of Phytosterols (MonoClad C18-HS)

Data No. LA868-0142



Conditions

System : LC800 HPLC system
Column : MonoClad C18-HS (150 x 3 mm I.D.)
Column Cat. No. : 5020-10803
Eluent : A) CH₃CN
 : B) H₂O
 : A/B = 95/5, v/v
Flow rate : 0.8 mL/min
Col. Temp. : 40 °C
Detection : UV 205 nm (GL-7452A PDA Detector)
Injection Vol. : 2 µL
Sample : Phytosterol

Solutes:

1.	Ergosterol	(1 mg/mL)
2.	Campesterol	(1 mg/mL)
3.	Stigmasterol	(1 mg/mL)
4.	β-Sitosterol	(1 mg/mL)

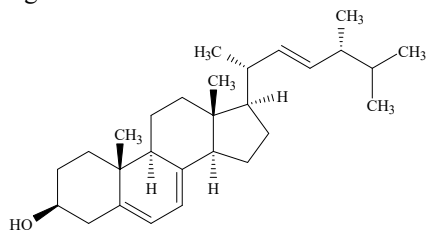
InertSearch™ for LC

Inertsil® Applications

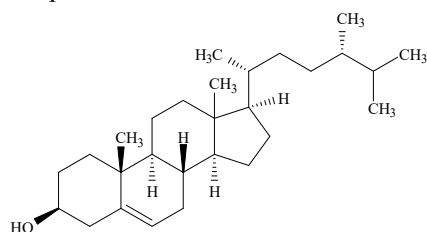
Analysis of Phytosterol(MonoClad C18-HS)

Data No. LA868-0142

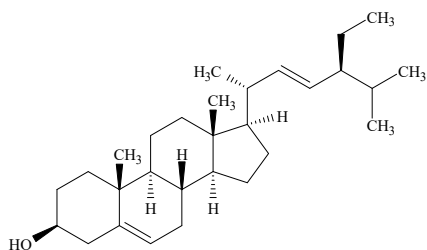
1. Ergosterol



2. Campesterol



3. Stigmasterol



4. β-Sitosterol

