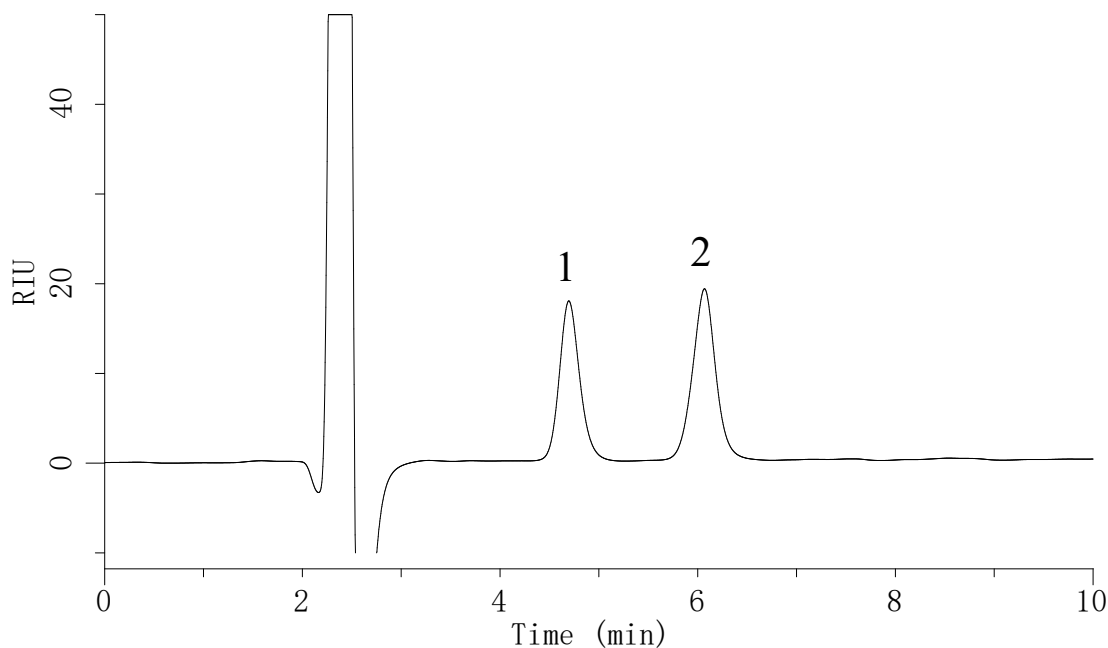


# InertSearch™ for LC

Inertsil® Applications

## Analysis of Taurine and Inositol

Data No. LA885-0871



### Conditions

**System** : GL-7400 HPLC system  
**Column** : Inertsil HILIC (5 $\mu$ m, 150 x 3.0 mm I.D.)  
**Column Cat. No.** : 5020-07715  
**Eluent** : A) CH<sub>3</sub>CN  
          : B) H<sub>2</sub>O  
          : A/B = 80/20  
**Flow rate** : 0.4 mL/min  
**Col. Temp.** : 40°C  
**Detection** : RI (35°C, positive) (GL-7454 RI Detector)  
**Injection Vol.** : 20  $\mu$ L  
**Sample** : Taurine and Inositol

### Analyte:

1. Taurine (500 mg/L)  
2. Inositol (500 mg/L)