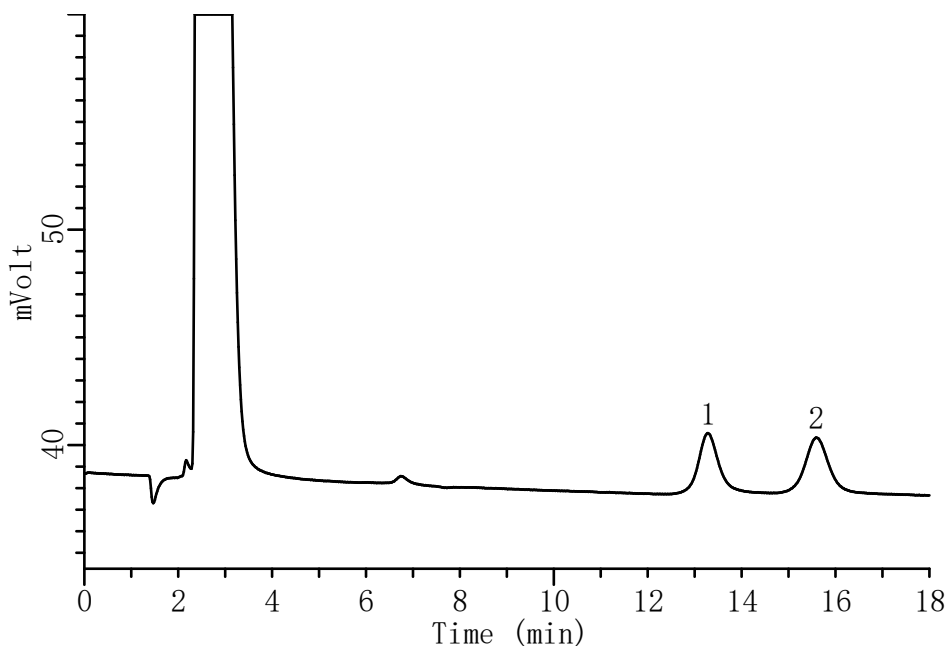


InertSearch™ for LC

Inertsil® Applications

Analysis of Glucosamine and Galactosamine by HPLC-ECD

Data No. LA887-0142



Conditions

System : GL-7400 HPLC system
Column : InertSphere Sugar-1(5 μ m, 150 x 4.6 mm I.D.)
Column Cat. No. : 5020-11001
Eluent : 14 mM KOH
Flow rate : 1.0 mL/min
Col. Temp. : 30 °C
Detection : ECD Pulse Mode (ED723 pulse EC Detector, Gold)
E1: 150 mV t1: 600 ms
E2: -1500 mV t2: 50 ms
E3: 600 mV t3: 50 ms
E4: -200 mV t4: 100 ms
ts: 50 ms

Analyte:

1. Galactosamine (1 μ g/mL)
2. Glucosamine (1 μ g/mL)

Injection Vol. : 10 μ L
Sample : Standard