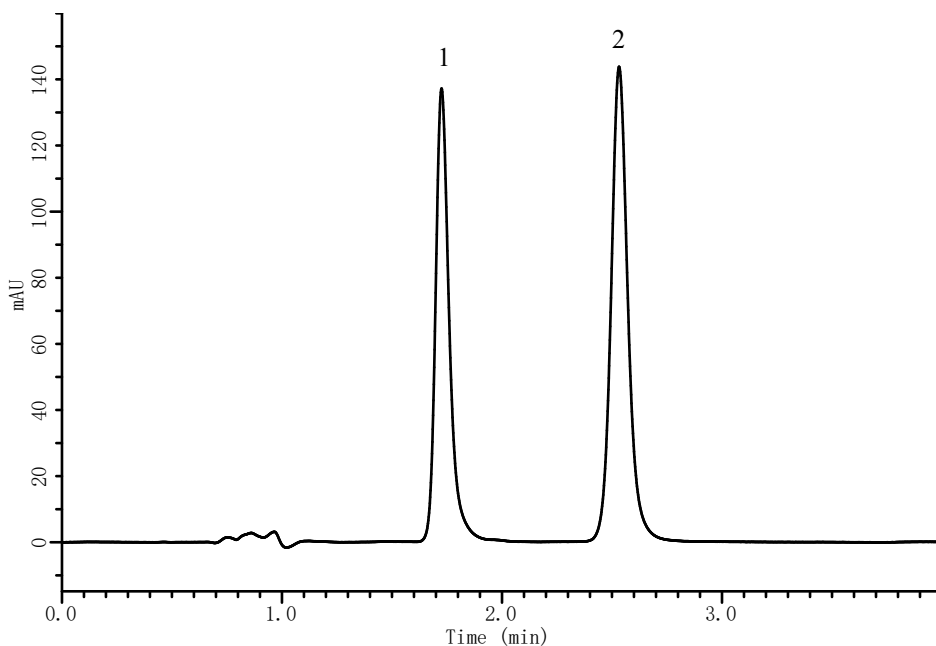


# InertSearch™ for LC

Inertsil® Applications

## Analysis of Basic Drugs (InertSustain C18)

Data No. LA890-0142



### Conditions

**System** : GL-7400 HPLC system  
**Column** : InertSustain C18 HP (3µm, 100 x 3.0 mm I.D.)  
**Column Cat. No.** : 5020-14424  
**Eluent** : A) CH<sub>3</sub>CN  
          : B) 10 mM Triethylamine (pH 10, HCOOH)  
          : A/B = 30/70  
**Flow rate** : 0.6 mL/min  
**Col. Temp.** : 40 °C  
**Detection** : UV 235 nm (GL-7452A PDA Detector)  
**Injection Vol.** : 5 µL  
**Sample** : Drugs

### Analyte:

1. Ranitidine (40 µg/mL)  
2. Sulpiride (40 µg/mL)