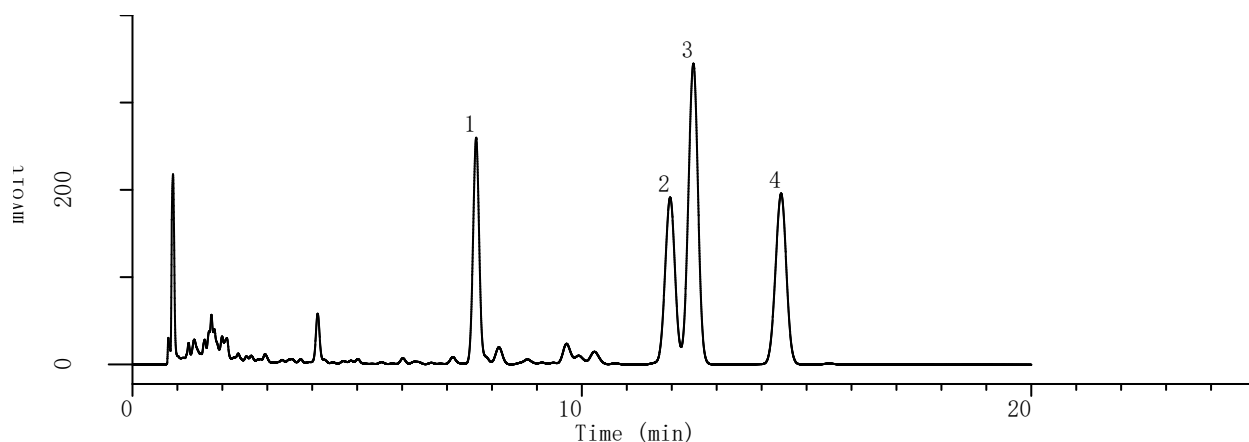


InertSearch™ for LC

Inertsil® Applications

Analysis of Phytosterol (InertSustain C18)

Data No. LA891-0142



Conditions

System : LC800 HPLC system
Column : InertSustain C18 HP (3 μ m, 150 x 2.1 mm I.D.)
Column Cat. No. : 5020-14415
Eluent : A) CH₃CN
 : B) H₂O
 : A/B = 95/5, v/v
Flow rate : 0.4 mL/min
Col. Temp. : 40 °C
Detection : UV 205 nm (GL-7452A PDA Detector)
Injection Vol. : 2 μ L
Sample : Phytosterol

Analyte:

1.	Ergosterol	(1 mg/mL)
2.	Campesterol	(1 mg/mL)
3.	Stigmasterol	(1 mg/mL)
4.	β -Sitosterol	(1 mg/mL)

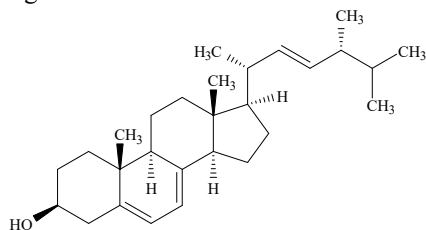
InertSearch™ for LC

Inertsil® Applications

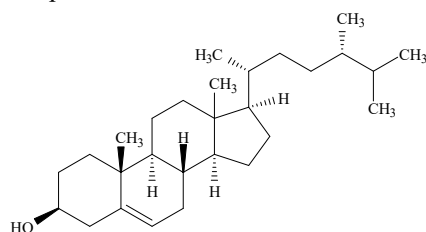
Analysis of Phytosterol (InertSustain C18)

Data No. LA891-0142

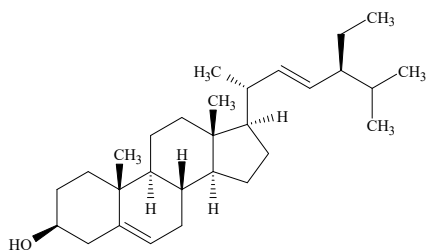
1. Ergosterol



2. Campesterol



3. Stigmasterol



4. β-Sitosterol

