

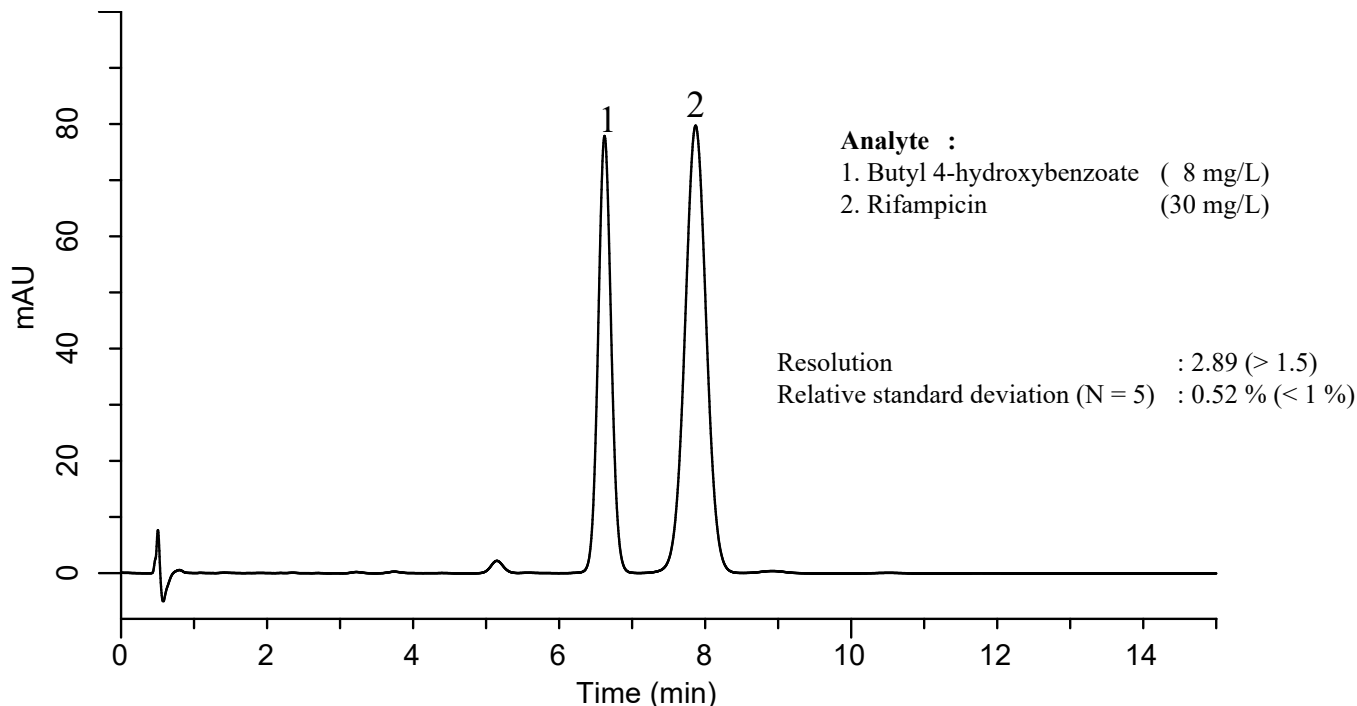
InertSearch™ for LC

Inertsil® Applications

Analysis of Rifampicin

(Under the Condition of Japanese Pharmacopoeia 16)

Data No. LA899-811



Conditions

System : GL-7400 HPLC system
Column : Inertsil C8-4 (5 μm, 100 x 4.6 mm I.D)
Column Cat. No. : 5020-04084
Eluent : Mixed liquid*
Flow Rate : 2.0 mL/min
Col. Temp. : 25 °C
Detection : UV 254 nm nm (GL-7450 UV Detector)
Injection Vol. : 50 μL
Sample : Standard

* Mixed liquid: Dissolve 4.2 g of Citric acid monohydrate and 1.4 g of Sodium perchlorate in 1000 mL of the mixture (H₂O / CH₃CN / Phosphoric acid buffer (pH 3.1)** = 11/7/2,v/v/v)

** Phosphoric acid buffer (pH 3.1) : Transfer 136.1 g of Potassium dihydrogen phosphate to a 1000 mL volumetric flask ,dissolve in 500 mL of water, add 6.3 mL of Phosphoric acid, and dilute with water to volume, and mix.