

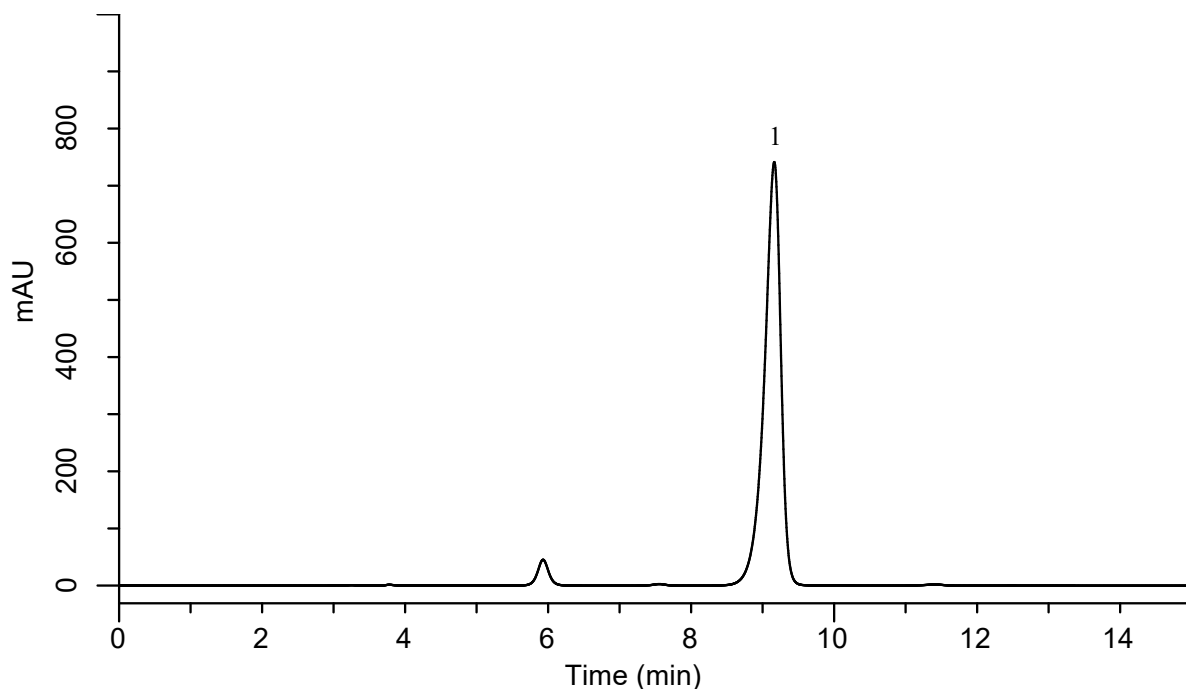
# InertSearch™ for LC

Inertsil® Applications

## Analysis of Lincomycin

(Under the Condition of Japanese Pharmacopoeia 16)

Data No. LA900-0811



### Conditions

|                        |  |  |                 |
|------------------------|--|--|-----------------|
| <b>System</b>          | : GL-7400 HPLC system  | <b>Analyte</b>                             | :               |
| <b>Column</b>          | : Inertsil C8-4 (5 $\mu$ m, 250 x 4.0 mm I.D)  | 1. Lincomycin Hydrochloride                | (1000 mg/L)     |
| <b>Column Cat. No.</b> | : 5020-04076   | <b>Theoretical plates</b>                  | : 8208 (> 4000) |
| <b>Eluent</b>          | : A) CH <sub>3</sub> CN<br>B) CH <sub>3</sub> OH<br>C) H <sub>3</sub> PO <sub>4</sub> a.q.* (pH 6.0, 10 % NH <sub>3</sub> a.q. ) | <b>Tailing factor</b>                      | : 0.80 (< 1.5)  |
|                        | A/B/C = 150/150/780 ,v/v/v   | <b>Relative standard deviation (N = 6)</b> | : 1.4 % (< 2 %) |
|                        | * Add H <sub>2</sub> O (1000 mL) to H <sub>3</sub> PO <sub>4</sub> (13.5 mL )  |  |                 |
| <b>Flow Rate</b>       | : 0.6 mL/min   |  |                 |
| <b>Col. Temp.</b>      | : 46 °C  |  |                 |
| <b>Detection</b>       | : UV 210 nm nm (GL-7450 UV Detector)   |  |                 |
| <b>Injection Vol.</b>  | : 20 $\mu$ L   |  |                 |
| <b>Sample</b>          | : Lincomycin Hydrochloride   |  |                 |