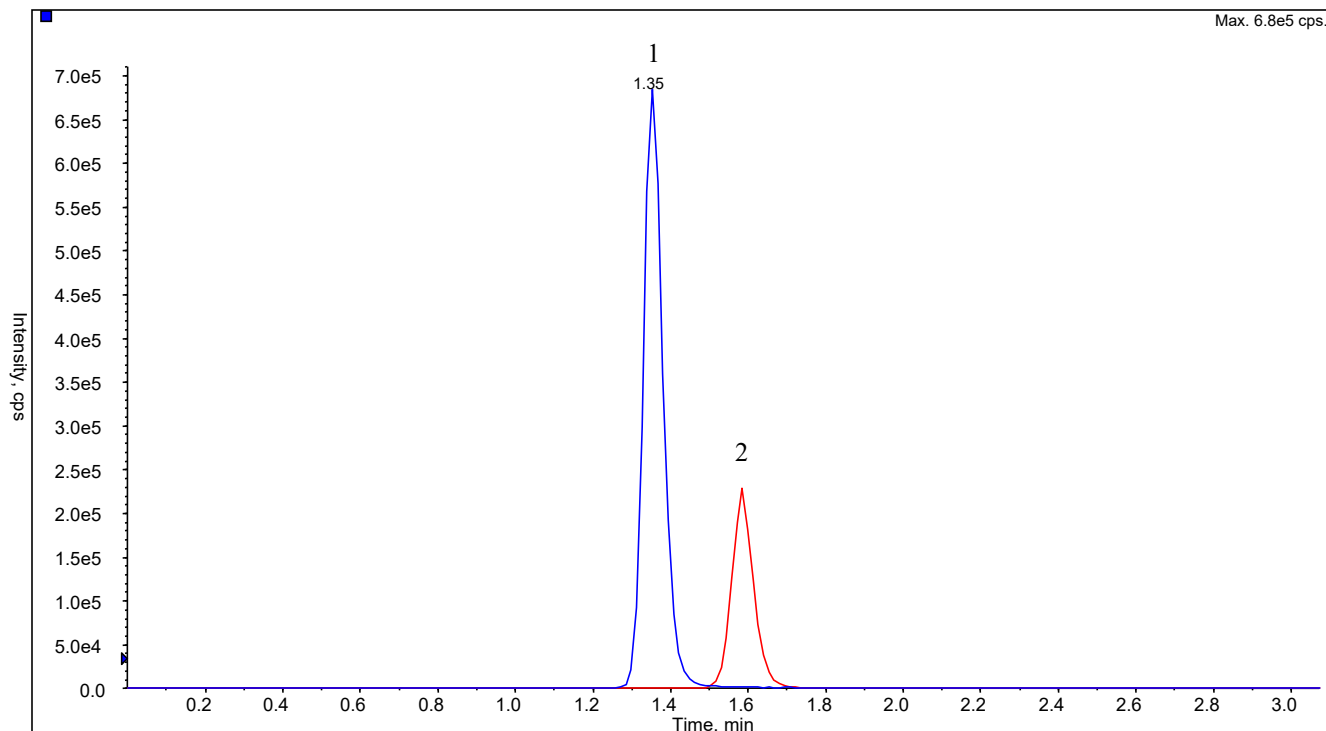


# InertSearch™ for LC

Inertsil® Applications

## Analysis of Basic drugs (InertSustain C18)

Data No. LA903-0811



### Conditions

**System** : LC800 HPLC system  
**Column** : InertSustain C18 (3 µm, 75 x 2.1 mm I.D.)  
**Column Cat. No.** : 5020-07413  
**Eluent** : A) CH<sub>3</sub>CN  
B) 0.1 % Ammonia solution (28 %) in H<sub>2</sub>O  
A/B = 30/70, v/v  
(Mixed by a gradient mixer)  
**Flow Rate** : 0.3 mL/min  
**Col. Temp.** : 40 °C  
**Detection** : LC/MS/MS (4000Q TRAP® : ESI, Positive, MRM)  
CUR CAD IS TEM GS1 GS2  
20 8 5500 700 60 30  
**Injection Vol.** : 5 µL  
**Sample** : Basic drugs

### Analyte:

1. Ranitidine (100 ng/mL) Q1: 315.2 Q3: 315.0  
2. Sulpiride (100 ng/mL) Q1: 342.2 Q3: 112.2