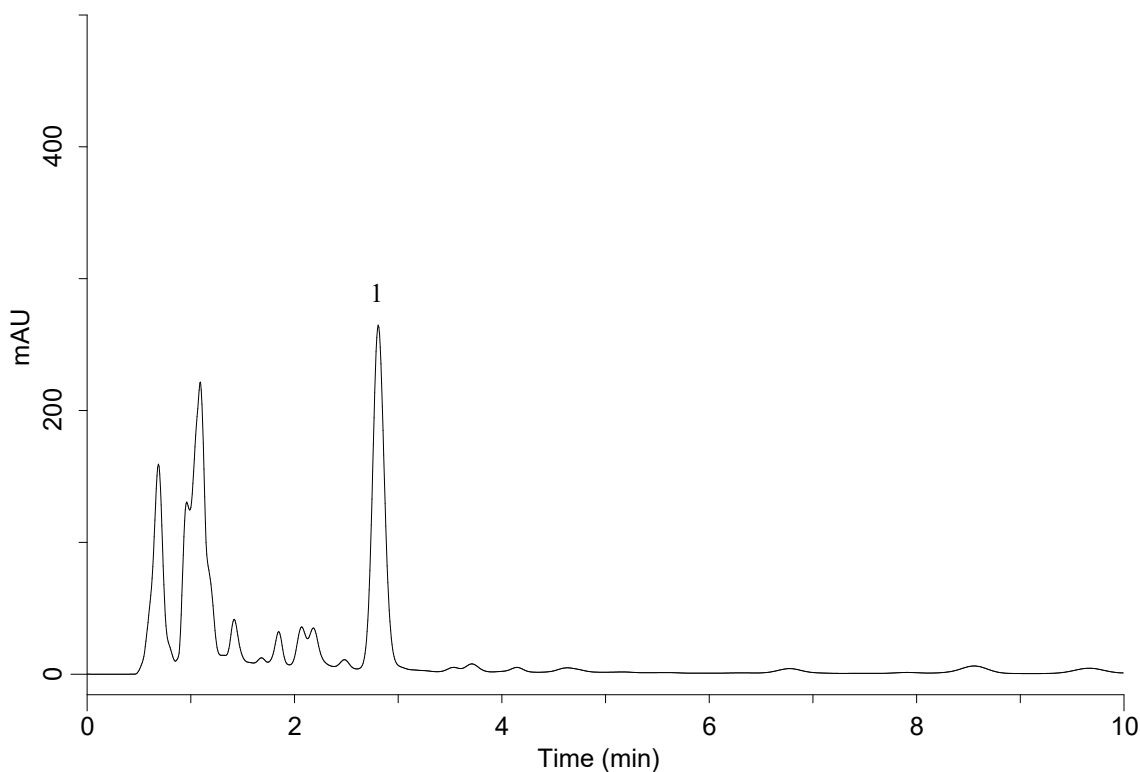


InertSearch™ for LC

Inertsil® Applications

Analysis of Licorice extract (InertSustain C18)

Data No. LA906-0811



Conditions

System : GL-7400 HPLC System
Column : InertSustain C18 (5 µm, 150 x 4.6 mm I.D.)
Column Cat. No. : 5020-07345
Eluent : A) CH₃CN
B) 2.1 % CH₃COOH
A/B = 40/60, v/v
Flow Rate : 2 mL/min
Col. Temp. : 40 °C
Detection : UV 254 nm (GL-7452A PDA Detector)
Injection Vol. : 20 µL
Sample : Licorice extract

Analyte :
1. Glycyrrhizic acid