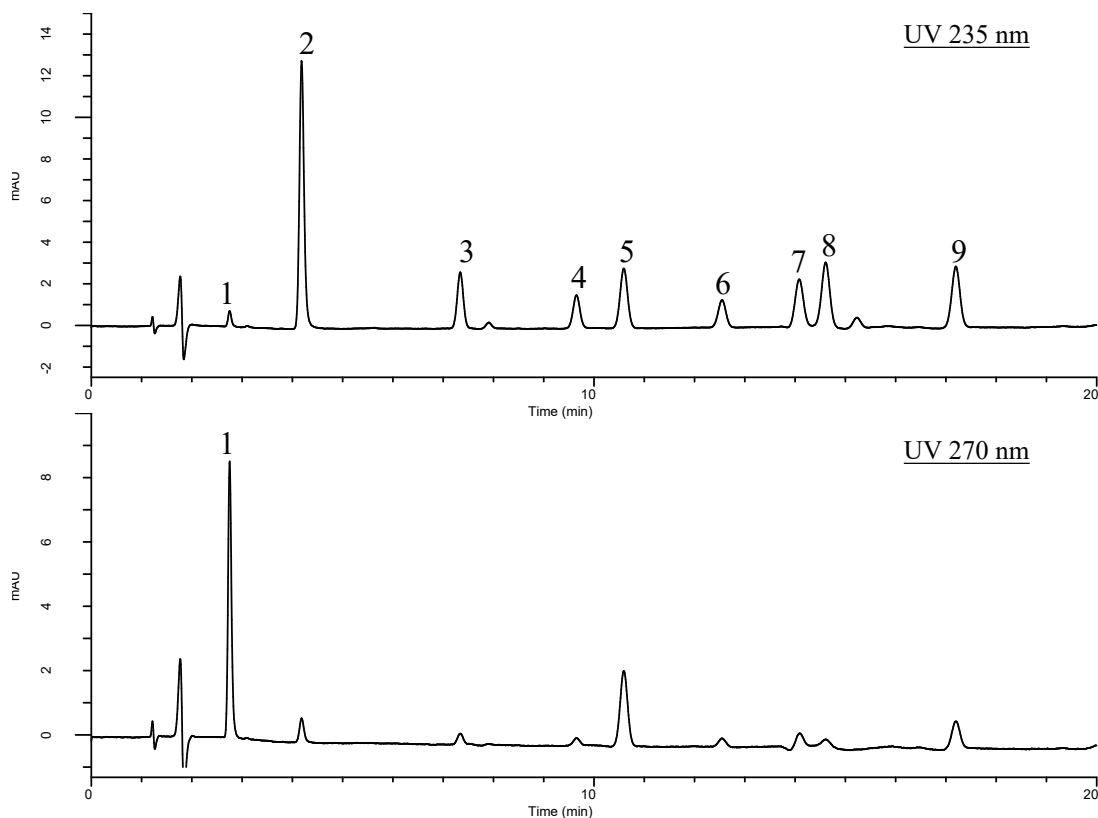


# InertSearch™ for LC

Inertsil® Applications

## Analysis of 9 kinds of Pesticides for Golf Course(InertSustain C18)

Data No. LA912-848



### Conditions

**System** : GL-7400 HPLC system  
**Column** : InertSustain C18 (5  $\mu$ m, 150 x 4.6 mm I.D)  
**Column Cat. No.** : 5020-07345  
**Eluent** : A) CH<sub>3</sub>CN  
B) 50 mM KH<sub>2</sub>PO<sub>4</sub> (pH 3.5, H<sub>3</sub>PO<sub>4</sub>)  
A/B = 35/65 -20 min- 60/40, v/v  
**Flow Rate** : 1.0 mL/min  
**Col. Temp.** : 40 °C  
**Detection** : UV 235 nm, 270 nm (GL-7452A PDA Detector)  
**Injection Vol.** : 5.0  $\mu$ L  
**Sampe** : Pesticides

### Analyte :

1. Asulam	(2.0 mg/L)
2. Oxine Copper	(2.0 mg/L)
3. Triclopyr	(2.0 mg/L)
4. Mecoprop (MCP)	(2.0 mg/L)
5. Thiram	(2.0 mg/L)
6. Flazasulfuron	(2.0 mg/L)
7. Halosulfuron Methyl	(2.0 mg/L)
8. Siduron	(2.0 mg/L)
9. Azoxystrobin	(2.0 mg/L)