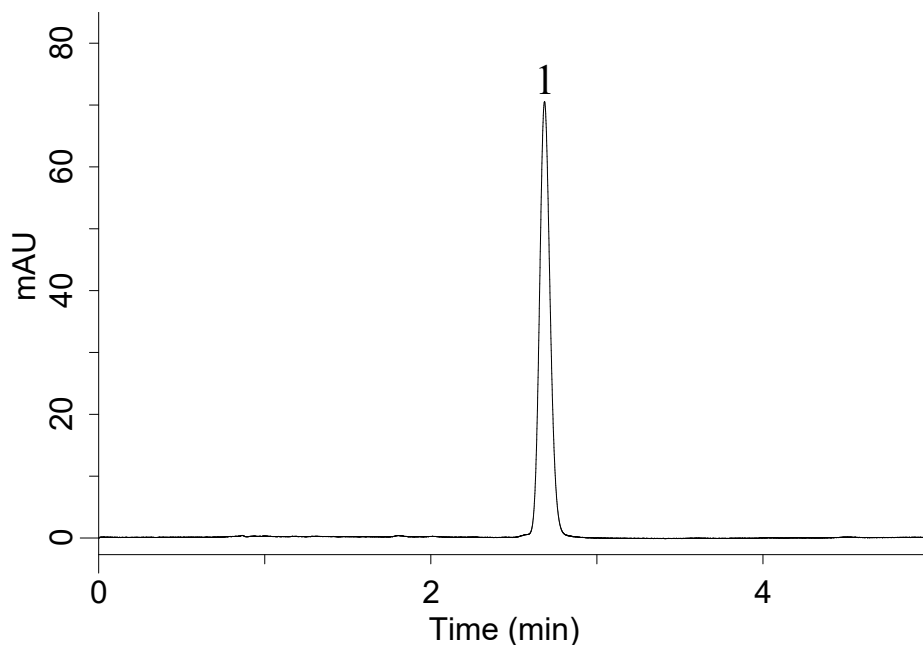


InertSearch™ for LC

Inertsil® Applications

Analysis of Atorvastatin tablet

Data No. LA922-0701



Conditions

Column : Inertsil C8-4 HP (3 μ m, 100 x 4.6 mm I.D.)
Column Cat. No. : 5020-14057
Eluent : A) CH₃CN
 : B) 50 mM CH₃COONH₄ (pH 5.0, CH₃COOH)
 : A/B = 50/50, v/v
Flow rate : 1 mL/min
Col. Temp. : 25°C
Detection : UV 240 nm
Injection Vol. : 5 μ L
Sample : Atorvastatin CaTablet

Analyte:

1. Atorvastatin