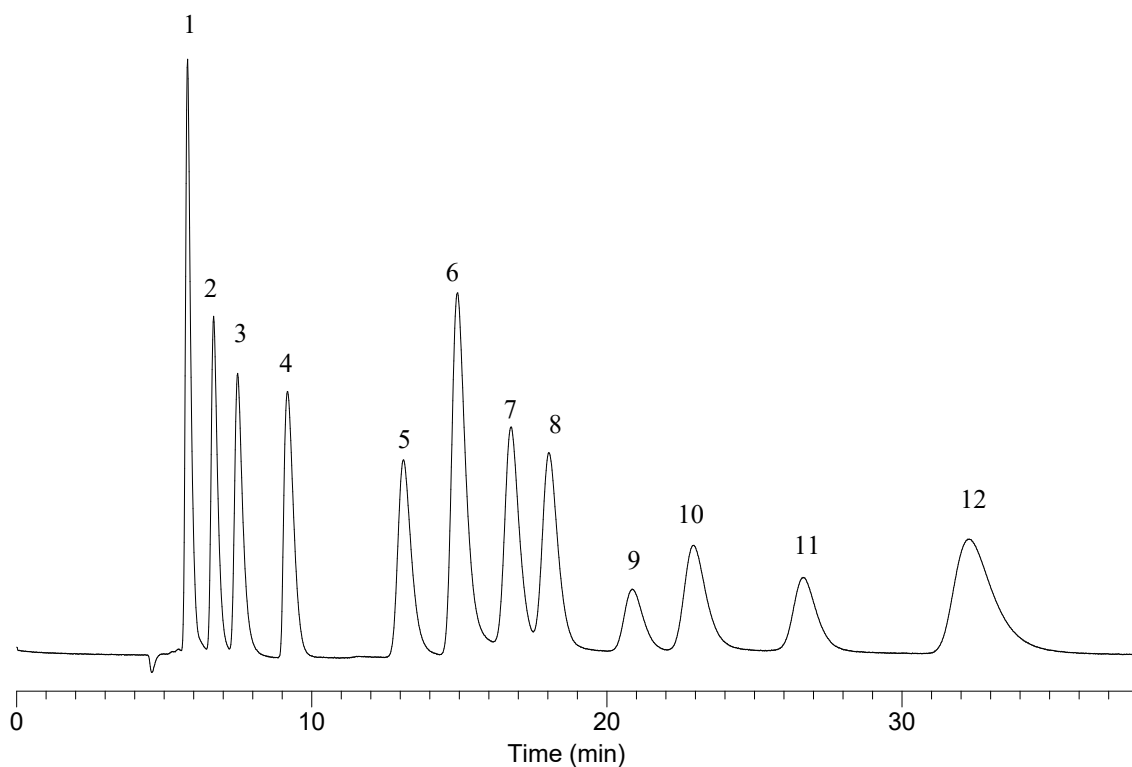


InertSearch™ for LC

Inertsil® Applications

Analysis of Sugars and Sugar Alcohols

Data No. LA924-0812



Conditions

System : LC700 system
Column : InertSphere Sugar-1 (5µm, 150 x 4.6 mm I.D.)
Column Cat. No.: 5020-11001
Eluent : 20 mM NaOH, 8 mM CH₃COONa
Flow rate : 0.3 mL/min
Col. Temp. : 25°C
Detection : ECD Pulse Mode (ED723, Gold)
E1: 150 mV t1: 600 ms
E2: -1500 mV t2: 50 ms
E3: 600 mV t3: 50 ms
E4: -200 mV t4: 100 ms
ts: 50 ms

Analyte:

1. Inositol	(5 mg/L)
2. Arabitol	(5 mg/L)
3. Mannitol	(5 mg/L)
4. Ethanol	(5 mg/L)
5. Fucose	(5 mg/L)
6. Galactosamine	(5 mg/L)
7. Galactose	(5 mg/L)
8. Glucose	(5 mg/L)
9. Sorbose	(5 mg/L)
10. Lactose	(5 mg/L)
11. Threose	(5 mg/L)
12. Talose	(5 mg/L)

Injection Vol. : 20 µL
Sample : Sugars and sugar alcohols