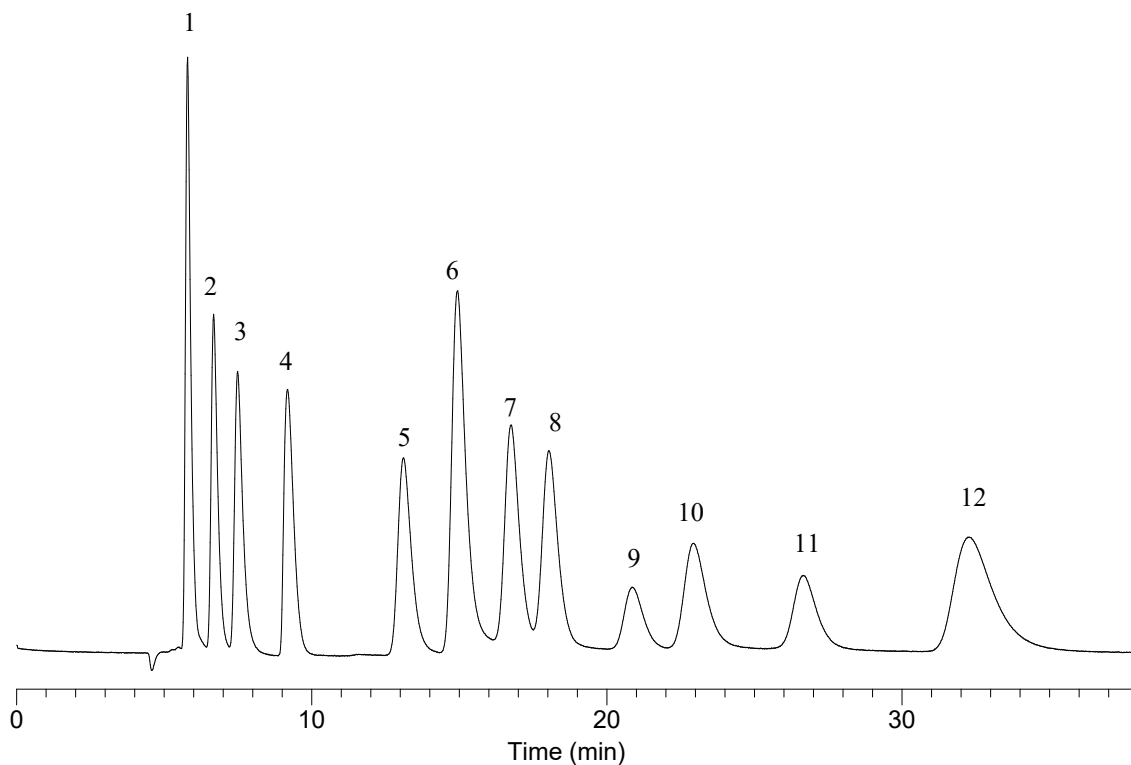


# InertSearch™ for LC

Inertsil® Applications

## Analysis of Sugars and Sugar Alcohols

Data No. LA924-0812



### Conditions

**System** : LC700 system  
**Column** : InertSphere Sugar-1 (5µm, 150 x 4.6 mm I.D.)  
**Column Cat. No.:** 5020-11001  
**Eluent** : 20 mM NaOH, 8 mM CH<sub>3</sub>COONa  
**Flow rate** : 0.3 mL/min  
**Col. Temp.** : 25°C  
**Detection** : ECD Pulse Mode (ED723, Gold)  
E1: 150 mV t1: 600 ms  
E2: -1500 mV t2: 50 ms  
E3: 600 mV t3: 50 ms  
E4: -200 mV t4: 100 ms  
ts: 50 ms

### Analyte:

1. Inositol	(5 mg/L)
2. Arabitol	(5 mg/L)
3. Mannitol	(5 mg/L)
4. Ethanol	(5 mg/L)
5. Fucose	(5 mg/L)
6. Galactosamine	(5 mg/L)
7. Galactose	(5 mg/L)
8. Glucose	(5 mg/L)
9. Sorbose	(5 mg/L)
10. Lactose	(5 mg/L)
11. Threose	(5 mg/L)
12. Talose	(5 mg/L)

**Injection Vol.** : 20 µL  
**Sample** : Sugars and sugar alcohols