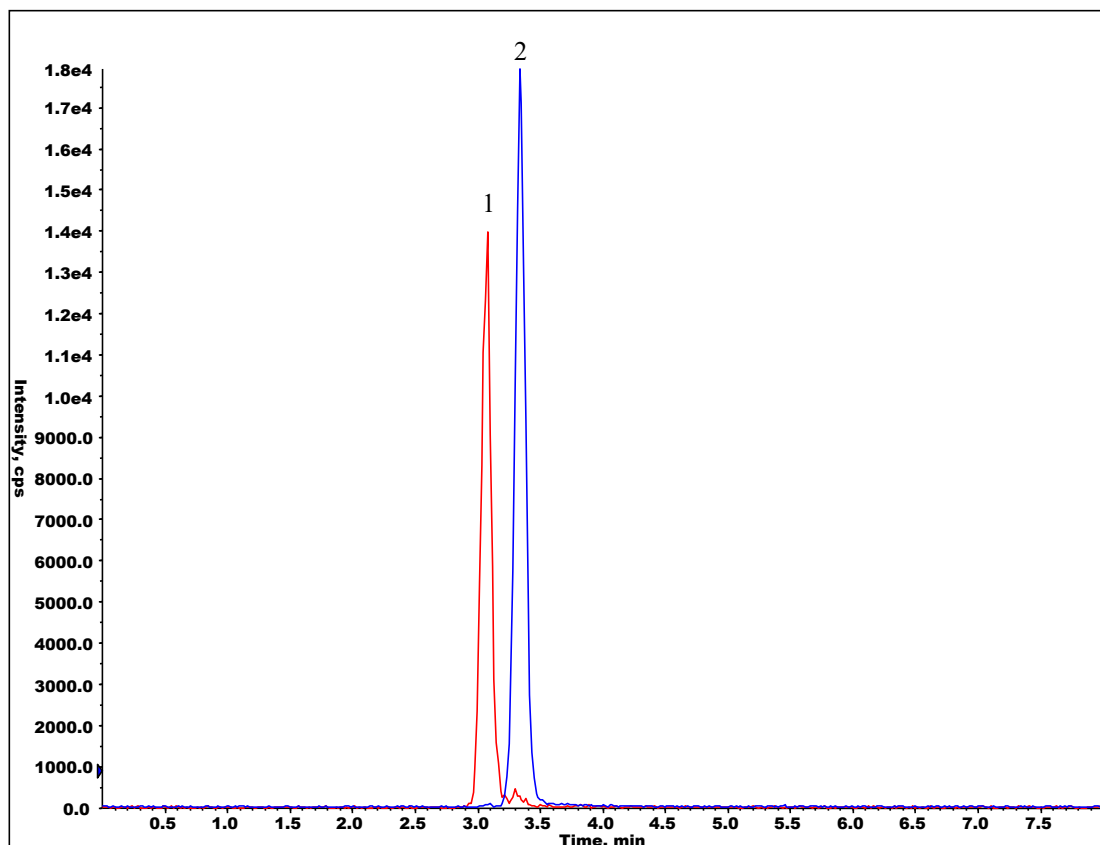


# InertSearch™ for LC

Inertsil® Applications

## Analysis of Diquat and Paraquat

Data No. LA934-0848



### Conditions

**System** : LC800 HPLC system  
API3000™

**Column** : InertSustain C18(2 µm, 50 x 2.1 mm I.D.)

**Column Cat. No.** : 5020-14352

**Eluent** : A) CH<sub>3</sub>CN, 0.1 % IPCC MS-3  
B) H<sub>2</sub>O, 0.1 % IPCC MS-3  
A/B = 7/93, v/v

**Flow rate** : 0.4 mL/min

**Col. Temp.** : 40 °C

**Detection** : LC/MS/MS (API 3000™: ESI, Positive, MRM)  
CUR CAD IS TEM ihe  
9 7 4500 500 on

**Injection Vol.** : 5 µL

**Analyte** : Pesticides

### Analyte:

	Q1	Q3	DP	CE
1. Diquat	183.3	156.2	41	29
2. Paraquat	185.2	170.2	41	27