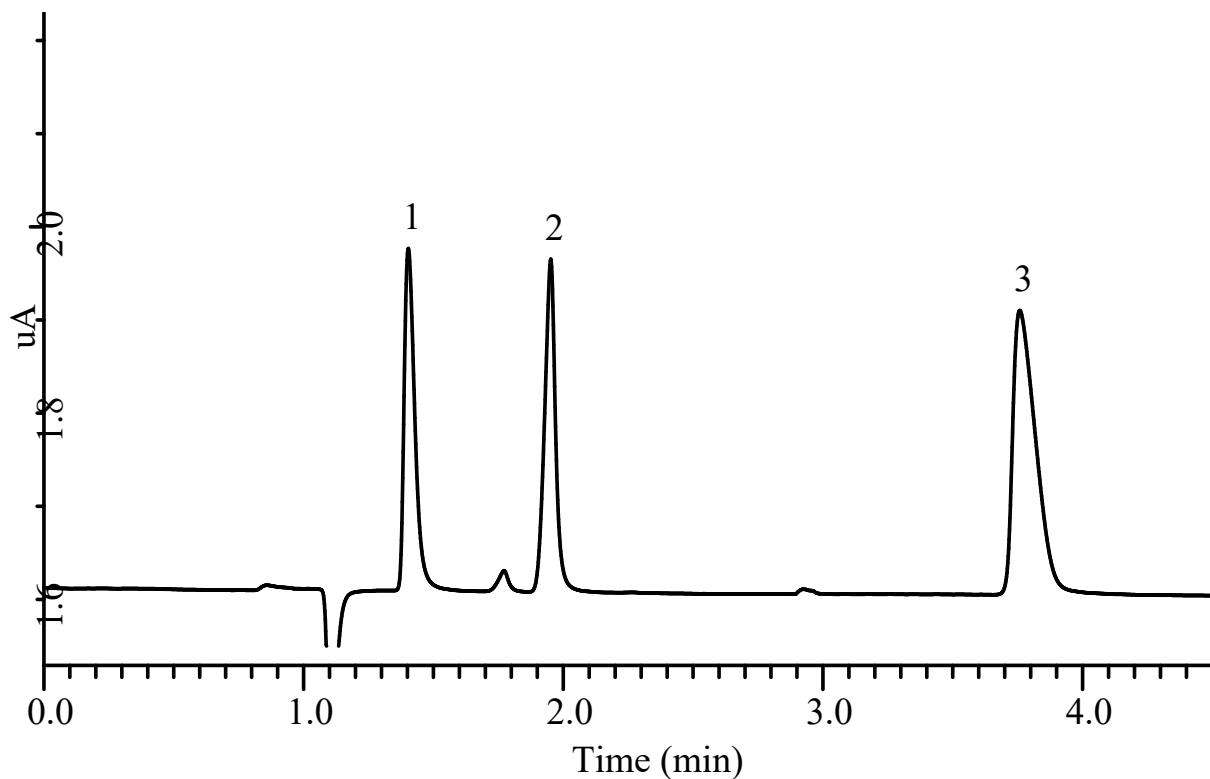


InertSearch™ for LC

Inertsil® Applications

Analysis of Alcohols HPLC-ECD

Data No. LA935-0142



Conditions

System : GL-7400 HPLC system + ED723
Column : InertSustain C18(3 μ m, 150 x 3.0 mm I.D.)
Column Cat. No. : 5020-014425
Eluent : A) CH₃CN
 : B) 0.1 % H₃PO₄ in H₂O
 : A/B = 5/95, v/v
Flow rate : 0.6 mL/min
Col. Temp. : 40 °C
Detection : ECD 1300 mV vs Ag/AgCl (ED723 EC Detector, Diamond)
Injection Vol. : 5 μ L
Sample : Standard

Analyte:

1. Methanol (10 g/L)
2. Ethanol (10 g/L)
3. 1-Propanol (10 g/L)

InertSearch™ for LC

Inertsil® Applications

Analysis of Alcohols HPLC-ECD

Data No. LA935-0142

