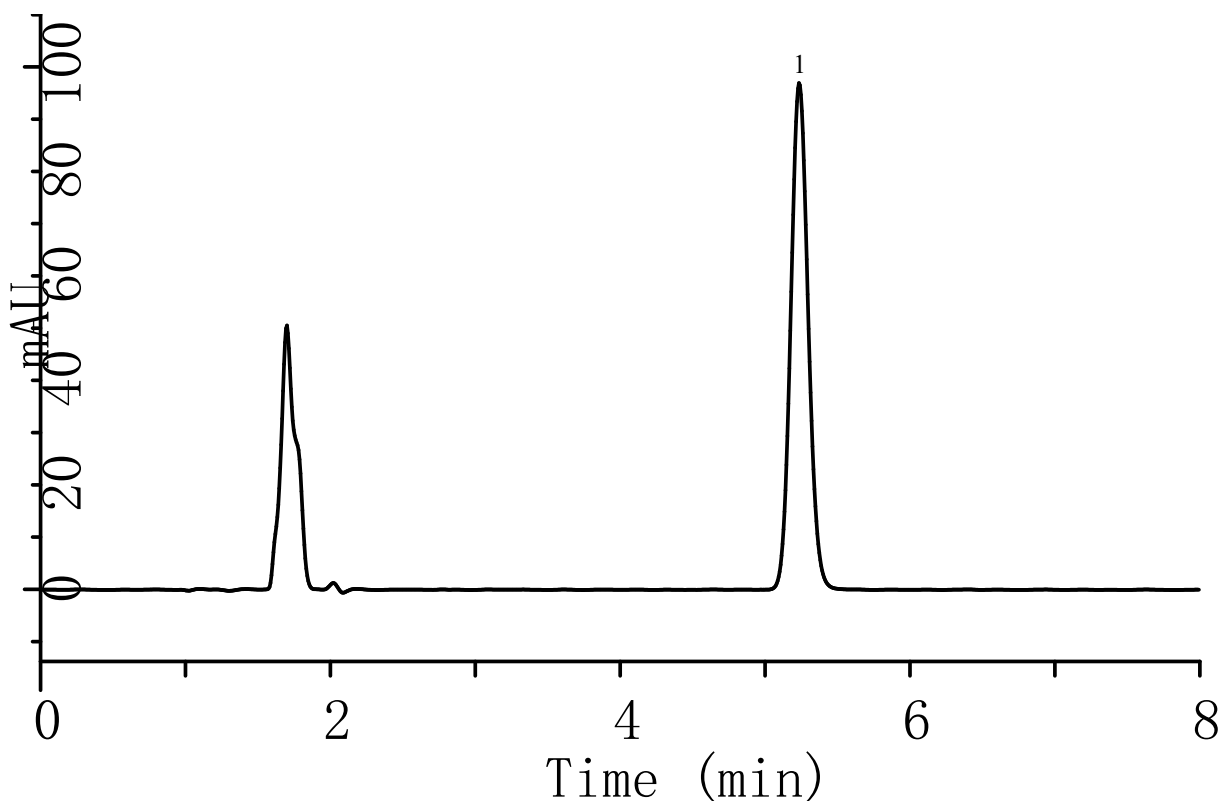


# InertSearch™ for LC

Inertsil® Applications

## Analysis of Acetylsalicylic acid (InertSustain C18)

Data No. LA929-0142



### Conditions

**System** : LC800 HPLC system  
**Column** : InertSustain C18 (5 µm, 150 x 4.6 mm I.D.)  
**Column Cat. No.** : 5020-07345  
**Eluent** : A) CH<sub>3</sub>CN  
          : B) THF  
          : C) CH<sub>3</sub>COOH  
          : D) H<sub>2</sub>O  
          : A/B = 20/5/5/70, v/v

### Analyte:

1. Acetylsalicylic acid (100 µg/mL)

**Flow rate** : 1.0 mL/min  
**Col. Temp.** : 40 °C  
**Detection** : UV 276 nm (LC800 UV Detector)  
**Injection Vol.** : 20 µL  
**Sample** : Standard