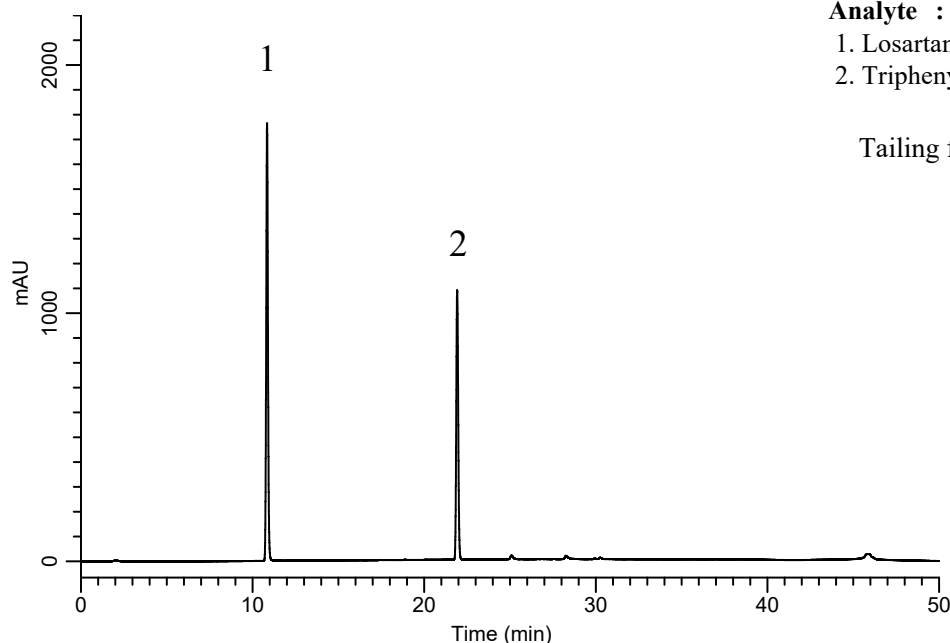


# InertSearch™ for LC

Inertsil® Applications

## Analysis of Losartan Potassium (Inertsil ODS-3)

Data No. LA936-811



Analyte :

1. Losartan Potassium (300 mg/L)

2. Triphenylmethanol (300 mg/L)

Tailing factor of 1 : 1.1

### Conditions

**System** : GL-7400 HPLC system  
**Column** : Inertsil ODS-3 (5  $\mu$ m, 250 x 4.0 mm I.D)  
**Column Cat. No.** : 5020-01762  
**Eluent** : A) CH<sub>3</sub>CN  
B) 0.1% H<sub>3</sub>PO<sub>4</sub>  
A/B = 25/75 -25 min- 90/10 -10 min- 90/10 -10 min- 25/75  
-5 min- 25/75 ,v/v (Total 50 min)  
**Flow Rate** : 1.0 mL/min  
**Col. Temp.** : 35 °C  
**Detection** : UV 220 nm (GL-7450 UV Detector)  
**Injection Vol.** : 10  $\mu$ L  
**Sampe** : Standard