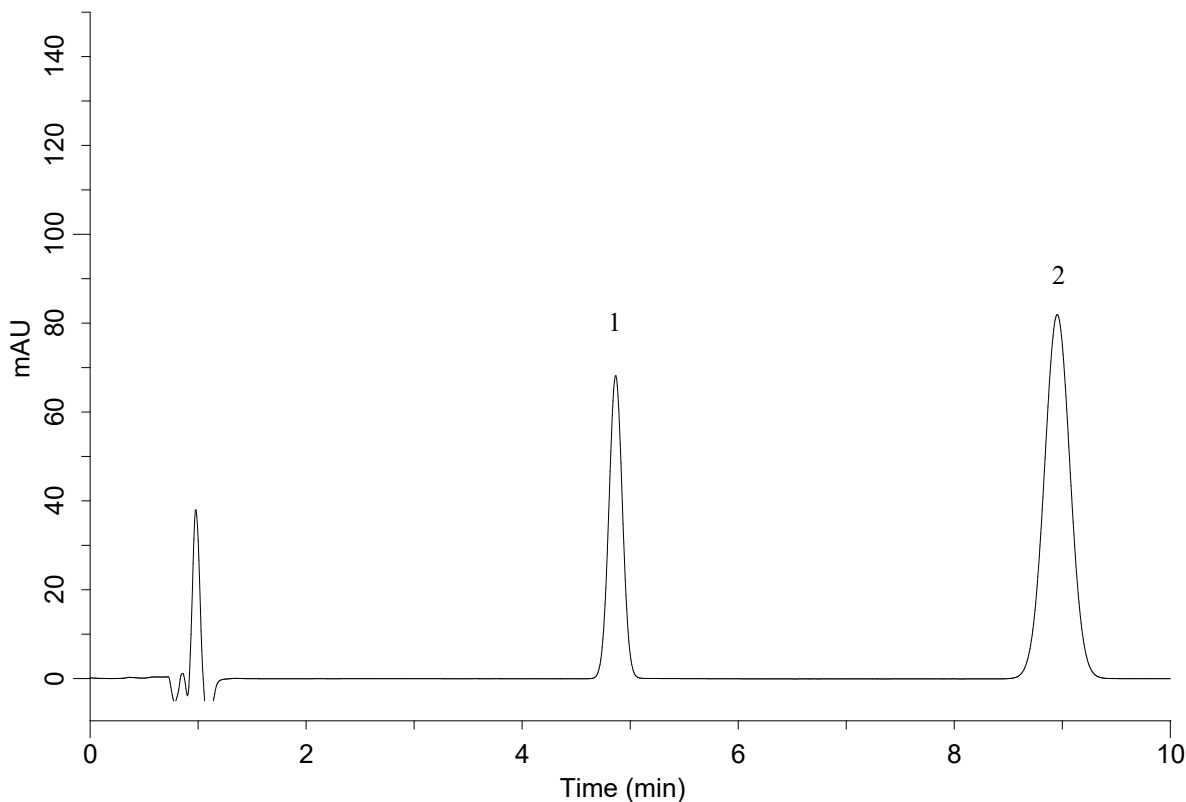


InertSearch™ for LC

Inertsil® Applications

Analysis of Terbinafine Chloride (Under the Condition of Japanese Pharmacopoeia)

Data No. LA940-811



Conditions

System : GL-7400 HPLC system
Column : Inertsil WP300 C18
(5 μ m, 125 x 4.0 mm I.D.)
Column Cat. No. : 5020-87037
Eluent : A) CH₃CN
B) THF
C) Solition*
A/B = 2/1/2, v/v/v
Flow rate : 1.3 mL/min
Col. Temp. : 25 °C
Detection : UV 282 nm (GL-7452A PDA Detector)
Injection Vol. : 10 μ L
Sample : Standard

Analyte:

1. <i>p</i> -Terphenyl	200 mg/L
2. Terbinafine Chloride	17.5 mg/L

*Dissolve 9 mL of Tetramethylammonium hydroxide (10 % in H₂O) in 2000 mL of water.
Adjust to pH 8.0 with phosphoric acid (1 in 25).