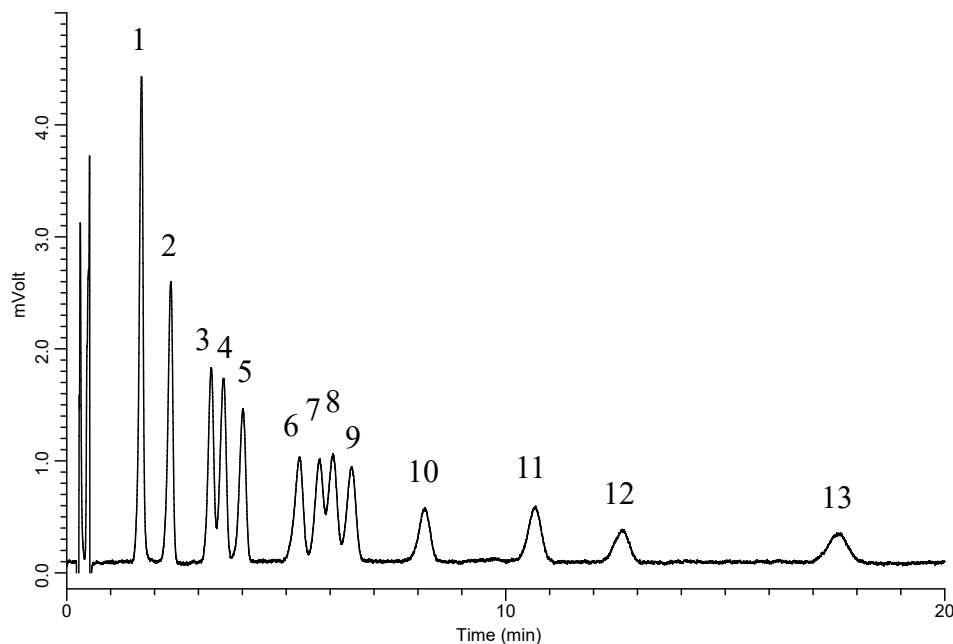


InertSearch™ for LC

Inertsil® Applications

Analysis of 13 kinds of Aldehydes (Detected by Pre-Column Method with DNPH)

Data No. LA958-0894



Conditions

System : LC800 HPLC system
Column : InertSustain C18 (3µm, 75 x 3.0 mm I.D.)
Column Cat. No. : 5020-07423
Eluent : A) CH₃CN
 B) H₂O
 C) THF
 A/B/C = 35/55/10, v/v/v
Flow rate : 1.0 mL/min
Col. Temp. : 40 °C
Detection : UV 360 nm (LC800 UV Detector)
Injection Vol. : 10 µL
Sample : DNPH-Aldehyde

Analyte:

| | |
|-----------------------------------|----------|
| 1. DNPH-Formaldehyde | 150 µg/L |
| 2. DNPH-Acetaldehyde | 150 µg/L |
| 3. DNPH-Acetone | 150 µg/L |
| 4. DNPH-Acrolein | 150 µg/L |
| 5. DNPH-Propionaldehyde | 150 µg/L |
| 6. DNPH-Crotonaldehyde | 150 µg/L |
| 7. DNPH-Methylethylketone | 150 µg/L |
| 8. DNPH-Methacrolein | 150 µg/L |
| 9. DNPH- <i>n</i> -Butyraldehyde | 150 µg/L |
| 10. DNPH-Benzaldehyde | 150 µg/L |
| 11. DNPH- <i>n</i> -Valeraldehyde | 150 µg/L |
| 12. DNPH- <i>m</i> -Tolualdehyde | 150 µg/L |
| 13. DNPH-Hexanal | 150 µg/L |