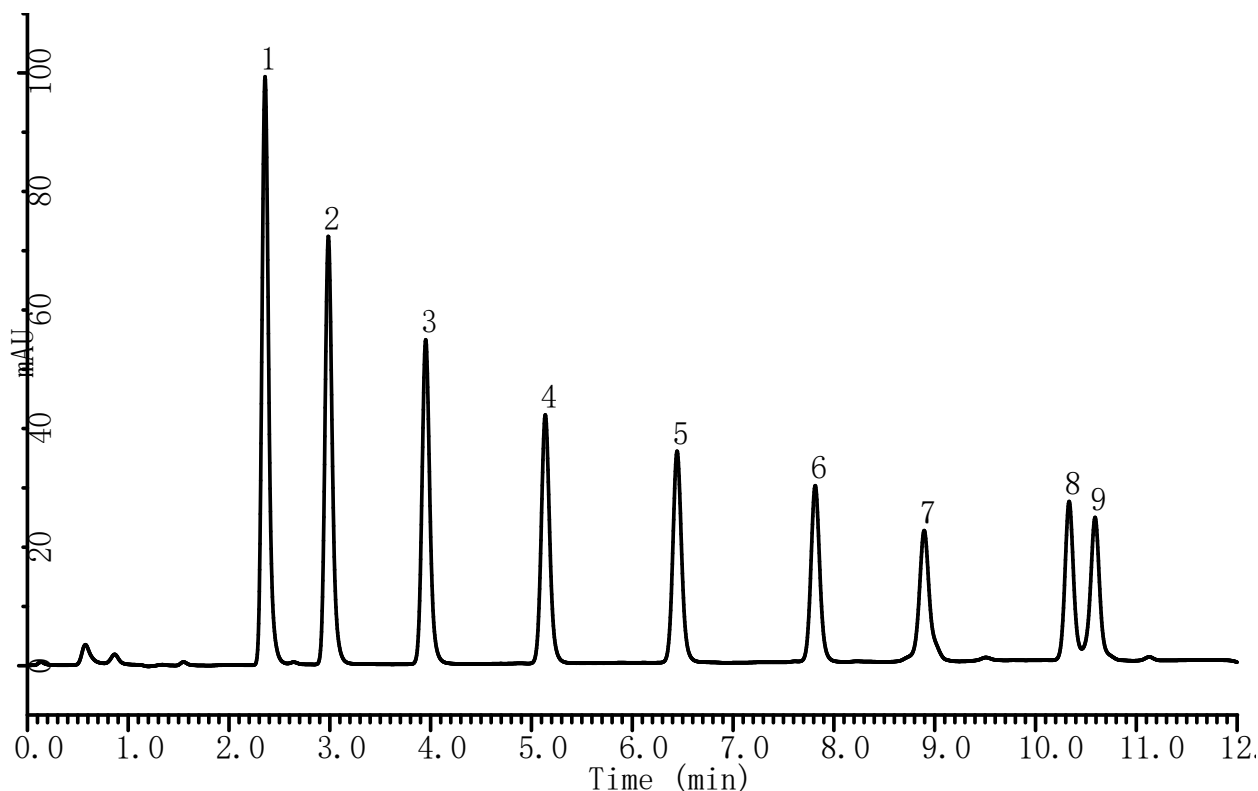


# InertSearch™ for LC

Inertsil® Applications

## Analysis of Analysis of 9 kinds of Phthalates

Data No. LA963-0142



### Conditions

**System** : GL-7400 HPLC system  
**Column** : Inertsil C8-4 (HP(3  $\mu$ m, 150 x 3.0 mm I.D.)  
**Column Cat. No.** : 5020-14055  
**Eluent** : A) CH<sub>3</sub>CN  
          B) H<sub>2</sub>O  
          A/B = 60/40 – 10 min – 90/10 – 2 min  
          – 90/10, v/v  
**Flow Rate** : 0.6 mL/min  
**Col. Temp.** : 40 °C  
**Detection** : UV 230 nm (GL-7450 UV Detector)  
**Injection Vol.** : 10  $\mu$ L  
**Sample** : Standard

### Analyte:

1. Dimethyl phthalate(DMP)	(10 $\mu$ g/mL)
2. Diethyl Phthalate(DEP)	(10 $\mu$ g/mL)
3. Dipropyl Phthalate(DPrP)	(10 $\mu$ g/mL)
4. Dibutyl Phthalate(DBP)	(10 $\mu$ g/mL)
5. Dipentyl Phthalate(DPeP)	(10 $\mu$ g/mL)
6. Dihexyl Phthalate(DHxP)	(10 $\mu$ g/mL)
7. Diheptyl Phthalate(DHpP)	(10 $\mu$ g/mL)
8. Dioctyl Phthalate(DOP)	(10 $\mu$ g/mL)
9. Dinonyl Phthalate(DNP)	(10 $\mu$ g/mL)