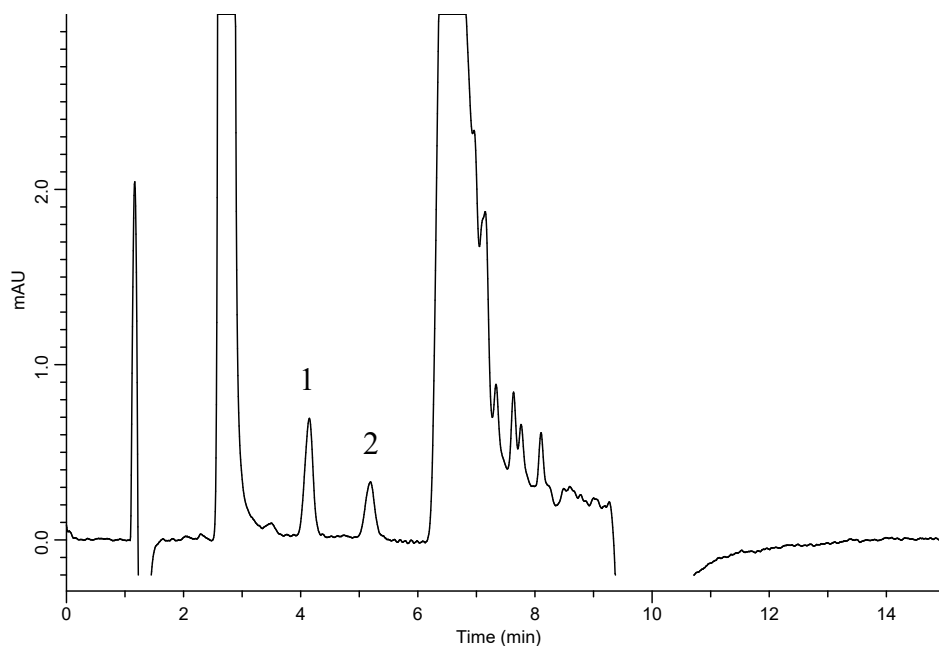


InertSearch™ for LC

Inertsil® Applications

Analysis of DNPH Aldehydes (Detected by Pre-Column Method with DNPH)

Data No. LA964-0894



Conditions

System : GL-7400 HPLC system
Column : InertSustain C18 (5µm, 150 x 4.6 mm I.D.)
Column Cat. No. : 5020-07345
Eluent : A) CH₃CN
 : B) H₂O
 : A/B = 60/40 – 3.9 min – 60/40 – 0.1 min – 95/5
 : - 2.9 min – 95/5 - 0.1 min- 60/40 – 8 min- 60/40, v/v
Flow rate : 1.0 mL/min
Col. Temp. : 40 °C
Detection : UV 360 nm (GL-7452A PDA detector)
Injection Vol. : 20 µL
Sample : DNPH-Aldehyde

Analyte:

1. DNPH-Formaldehyde 5 µg/L
2. DNPH-Acetaldehyde 5 µg/L