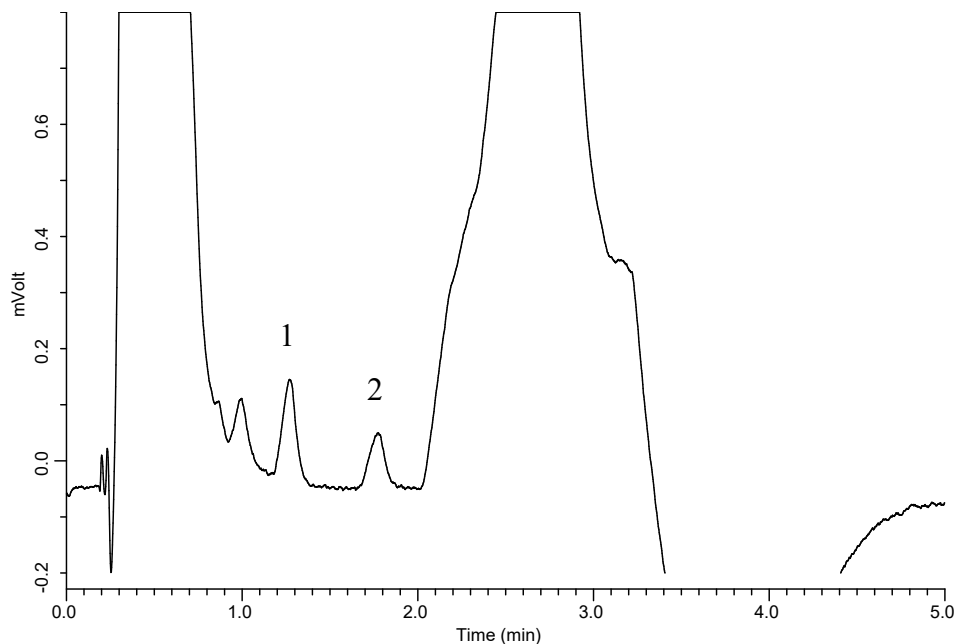


InertSearch™ for LC

Inertsil® Applications

Analysis of DNPH Aldehydes (Detected by Pre-Column Method with DNPH)

Data No. LA965-0894



Conditions

System : LC800 HPLC system
Column : InertSustain C18 (2µm, 75 x 2.1 mm I.D.)
Column Cat. No. : 5020-14353
Eluent : A) CH₃CN
 : B) H₂O

Analyte:

1. DNPH-Formaldehyde 5 µg/L
2. DNPH-Acetaldehyde 5 µg/L

Tim[min]	A(%)	B(%)	Flow Rate[µL/min]
0.0	50	50	600
1.9	50	50	600
2.0	95	5	800
3.2	95	5	800
3.3	50	50	600
5.0	50	50	600

Col. Temp. : 40 °C
Detection : UV 360 nm (LC800 UV Detector)
Injection Vol. : 5 µL
Sample : DNPH-Aldehyde