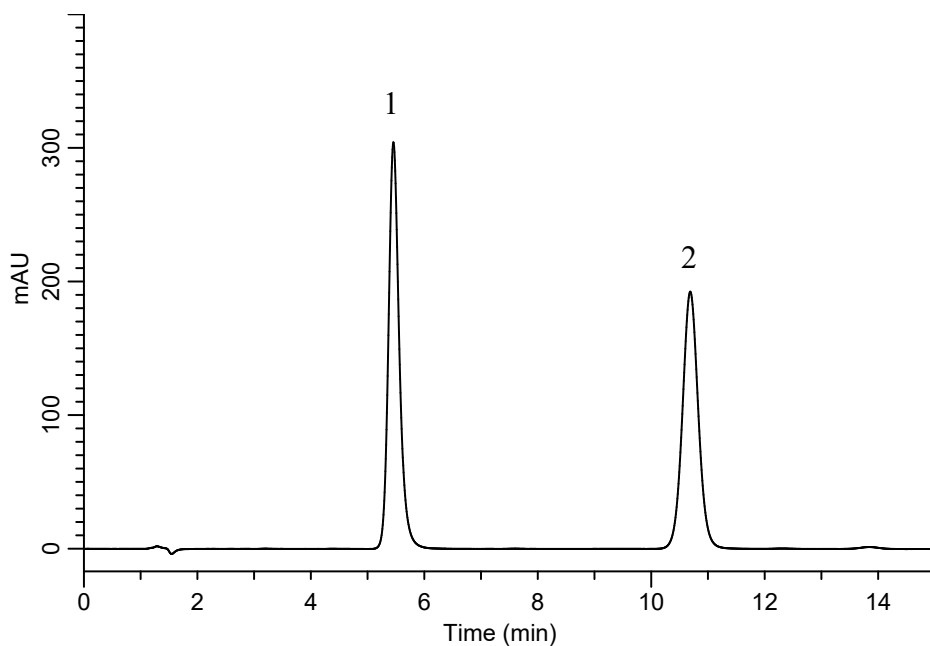


InertSearch™ for LC

Inertsil® Applications

Analysis of Valsartan (InertSustain C18)

Data No. LA966-0894



Conditions

System : GL-7400 HPLC system
Column : InertSustain C18 (5µm, 125 x 3.0 mm I.D.)
Column Cat. No. : 5020-07327
Eluent : A) CH₃CN
 : B) H₂O
 : C) CH₃COOH
 : A/B/C = 500/500/1, v/v/v (Premix)
Flow rate : 0.4 mL/min
Col. Temp. : 25 °C
Detection : UV 225 nm (GL-7452A PDA Detecor)
Injection Vol. : 10 µL

Analyte:

1. Valsartan 50 mg/L
2. Diclofenac sodium 60 mg/L

	Valsartan
Tailing factor	1.23
Theoretical plate number	4325
Resolution (1, 2)	12.6