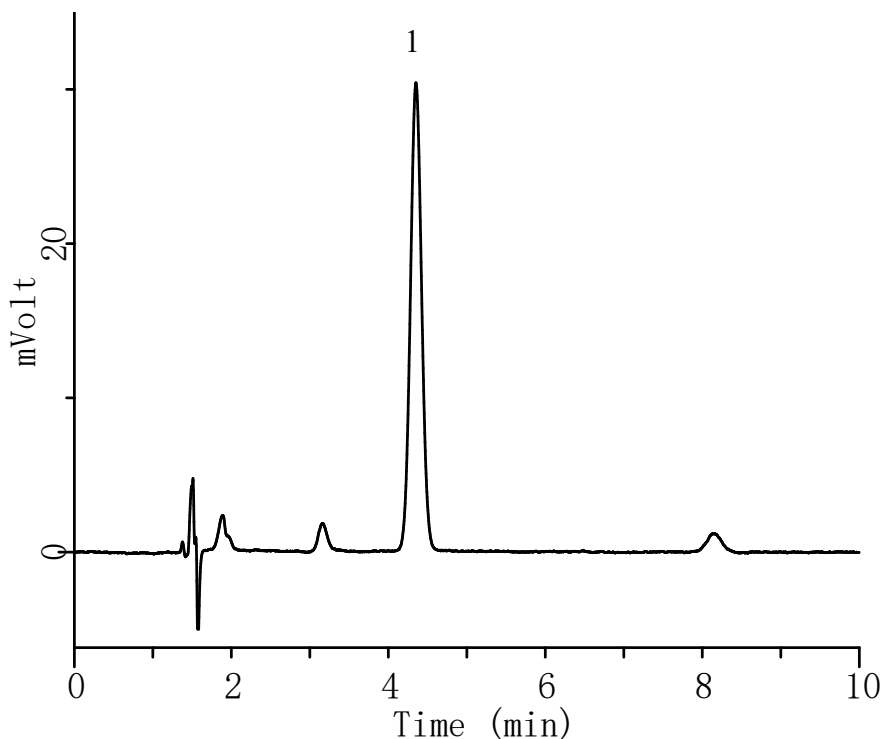


InertSearch™ for LC

Inertsil® Applications

Analysis of Non-ionic surfactant (Detected by Pre-Column complexation with Co-PAR)

Data No. LA973-0142



Conditions

System : LC800 HPLC system
Column : InertSustain C18 (5 μ m, 150 x 4.6 mm I.D.)
Column Cat. No. : 5020-07345
Eluent : A) CH₃OH
 : B) 10 mM Na₂B₄O₇
 : A/B = 38/62 ,v/v
Flow rate : 1.0 mL/min
Col. Temp. : 40 °C
Detection : UV 510 nm (LC800 UV Detector)
Injection Vol. : 20 μ L
Sample : Heptaoxyethylene dodecyl ether (cobalt-4-(2-pyridylazo) resorcinol complex)

Analyte:

1. Heptaoxyethylene dodecyl ether [Deriv.]
0.02 mg/L