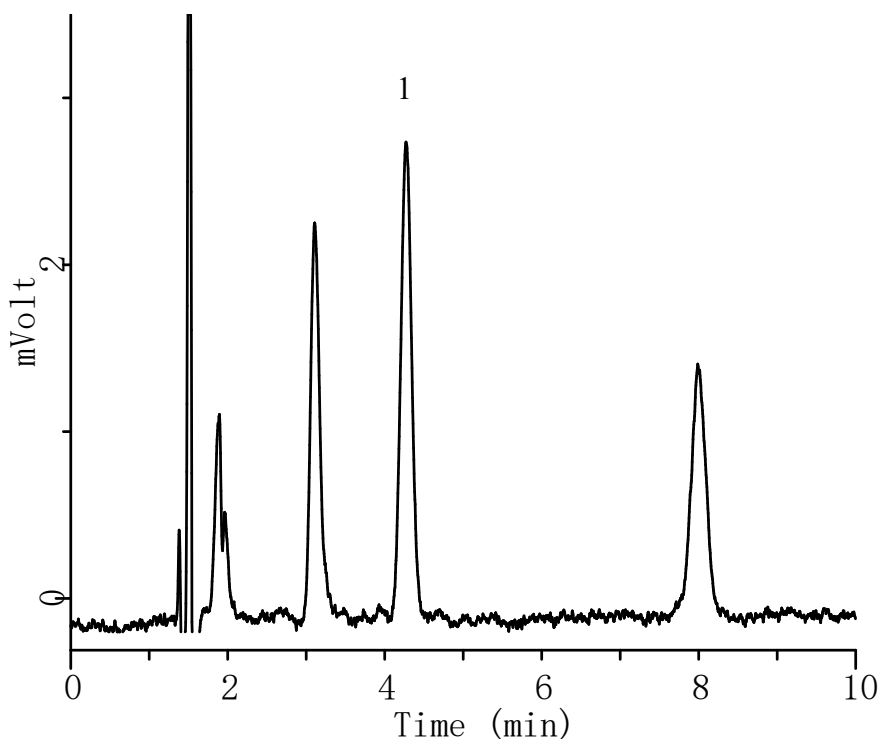


# InertSearch™ for LC

Inertsil® Applications

## Analysis of Non-ionic surfactant (Detected by Pre-Column complexation with Co-PAR)

Data No. LA974-0142



### Conditions

**System** : LC800 HPLC system  
**Column** : InertSustain C18 (5 $\mu$ m, 150 x 4.6 mm I.D.)  
**Column Cat. No.** : 5020-07345  
**Eluent** : A) CH<sub>3</sub>OH  
          : B) 10 mM Na<sub>2</sub>B<sub>4</sub>O<sub>7</sub>  
          : A/B = 38/62 ,v/v  
**Flow rate** : 1.0 mL/min  
**Col. Temp.** : 40 °C  
**Detection** : UV 510 nm (LC800 UV Detector)  
**Injection Vol.** : 20  $\mu$ L  
**Sample** : Heptaoxyethylene dodecyl ether (cobalt-4-(2-pyridylazo) resorcinol complex )

### Analyte:

1. Heptaoxyethylene dodecyl ether [Deriv.]  
0.002 mg/L