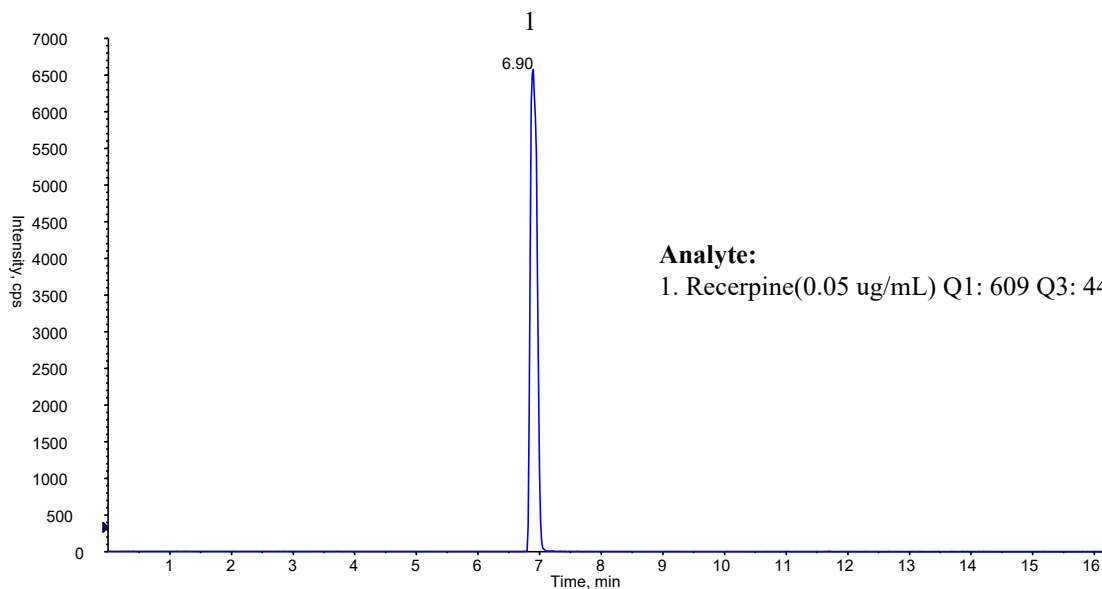


# InertSearch™ for LC

Inertsil® Applications

## Analysis of Recerpine (Inertsil ODS-4)

Data No. LA976-0811



### Conditions

**System** : LC800 HPLC system  
4000 Q TRAP®

**Column** : Inertsil ODS-4 HP (3µm, 50 x 2.1 mm I.D.)

**Column Cat. No.** : 5020-14062

**Eluent** : A) 0.02 % TFA in CH<sub>3</sub>CN  
: B) 0.02 % TFA in H<sub>2</sub>O  
A/B = 25/75 -3 min- 25/75 -2 min- 90/10 -7 min- 90/10, v/v

**Flow rate** : 0.2 mL/min

**Col. Temp.** : 40 °C

**Detection** : LC/MS/MS (4000Q TRAP® : ESI, Positive, MRM)  
CUR CAD IS TEM GS1 GS2  
20 6 4500 600 70 80

**Injection Vol.** : 10 µL

**Sample** : Standard