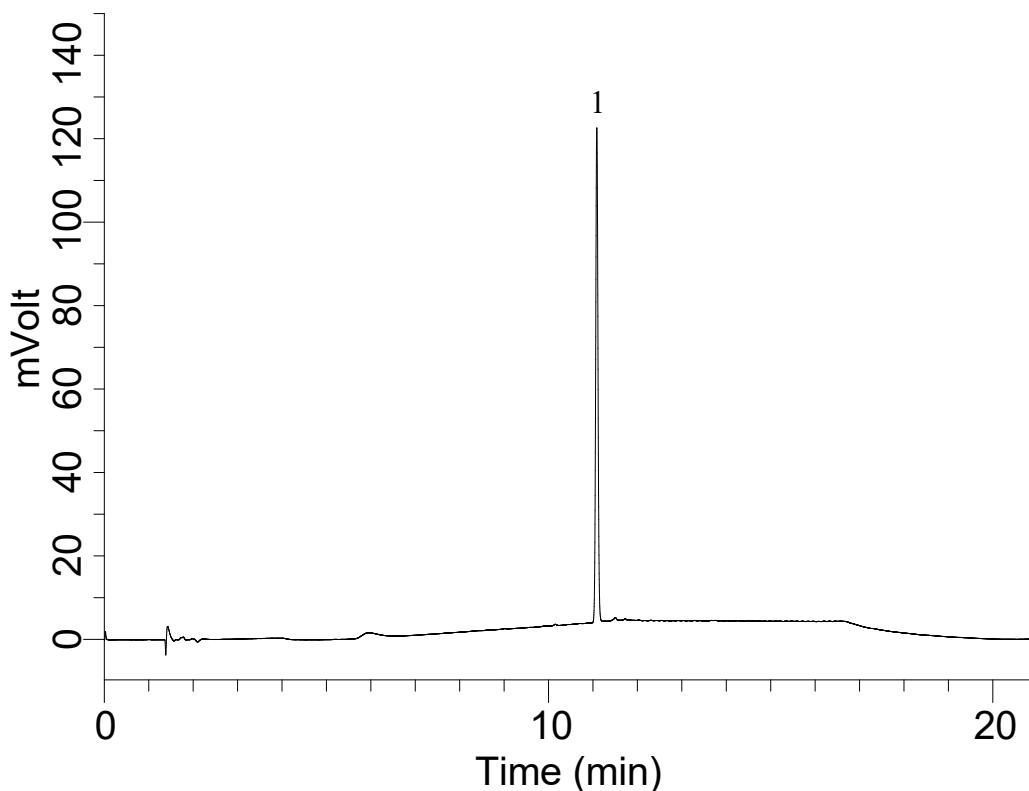


# InertSearch™ for LC

Inertsil® Applications

## Analysis of Tolclofos-methyl

Data No. LA978-811



### Conditions

**System** : LC800 HPLC system  
**Column** : InertSustain C18 (5 µm, 150 x 3.0 mm I.D.)  
**Column Cat. No.** : 5020-07325  
**Eluent** : A) CH<sub>3</sub>CN  
          : B) H<sub>2</sub>O

**Analyte :**  
Tolclofos-methyl (10 mg/L)

Time(min)	A(%)	B(%)
0	20	80
2	20	80
10	90	10
15	90	10
18	50	50
19	20	80
21	20	80

**Flow Rate** : 0.5 mL/min  
**Col. Temp.** : 40 °C  
**Detection** : UV 210 nm (LC800 UV Detector , 5 mm UV cell, Response 0.5 sec)  
**Injection Vol.** : 10 µL  
**Sample** : Standard diluted with 50 % CH<sub>3</sub>CN