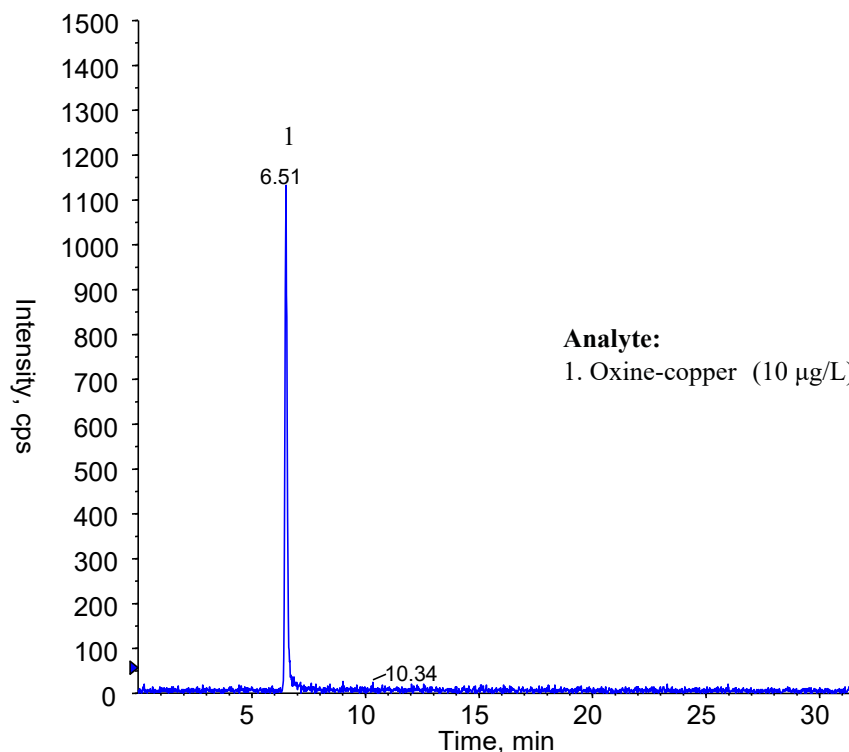


InertSearch™ for LC

Inertsil® Applications

Analysis of Oxine-copper

Data No. LA980-0811



Analyte:

1. Oxine-copper (10 µg/L) Q1: 145.7 Q3: 74.8

Conditions

System : LC800 HPLC system
4000 Q TRAP®

Column : InertSustain C18 (3µm, 150 x 2.1 mm I.D.)

Column Cat. No. : 5020-07415

Eluent : A) CH₃CN
: B) 0.1 % HCOOH in H₂O
A/B = 5/95 -38 min- 100/0, v/v

Flow rate : 0.2 mL/min

Col. Temp. : 40 °C

Detection : LC/MS/MS (4000Q TRAP® : ESI, Positive, MRM)
CUR CAD IS TEM GS1 GS2
30 6 5000 700 80 80

Injection Vol. : 5 µL

Sample : Standard