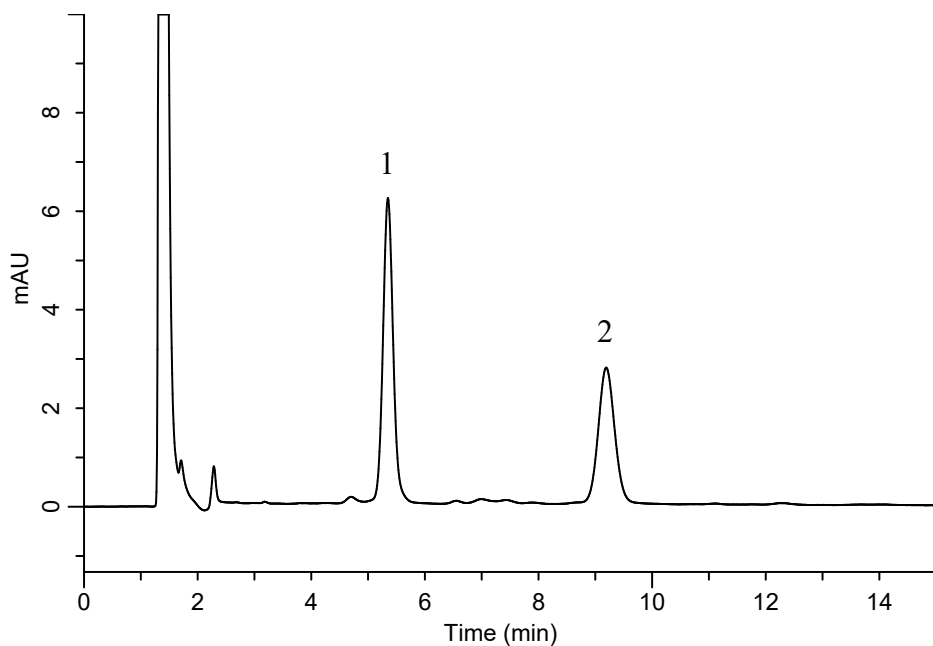


# InertSearch™ for LC

Inertsil® Applications

## Analysis of Spiramycins in Beef (Standard addition)

Data No. LA992-0894



### Conditions

**Column** : InertSustain C18 (5 $\mu$ m, 150 x 4.6 mm I.D.)  
**Column Cat. No.** : 5020-07345  
**Eluent** : A) CH<sub>3</sub>CN  
B) 65 mM NaH<sub>2</sub>PO<sub>4</sub> (pH 2.5, H<sub>3</sub>PO<sub>4</sub>)  
A/B = 25/75, v/v  
**Flow rate** : 0.5 mL/min  
**Col. Temp.** : 40 °C  
**Detection** : UV 235 nm  
**Injection Vol.** : 10  $\mu$ L  
**Sample** : Beef (Standard addition)

### Analyte:

1. Neospiramycin I	2.0 mg/L*
2. Spiramycin I	2.0 mg/L*
* additive amount	