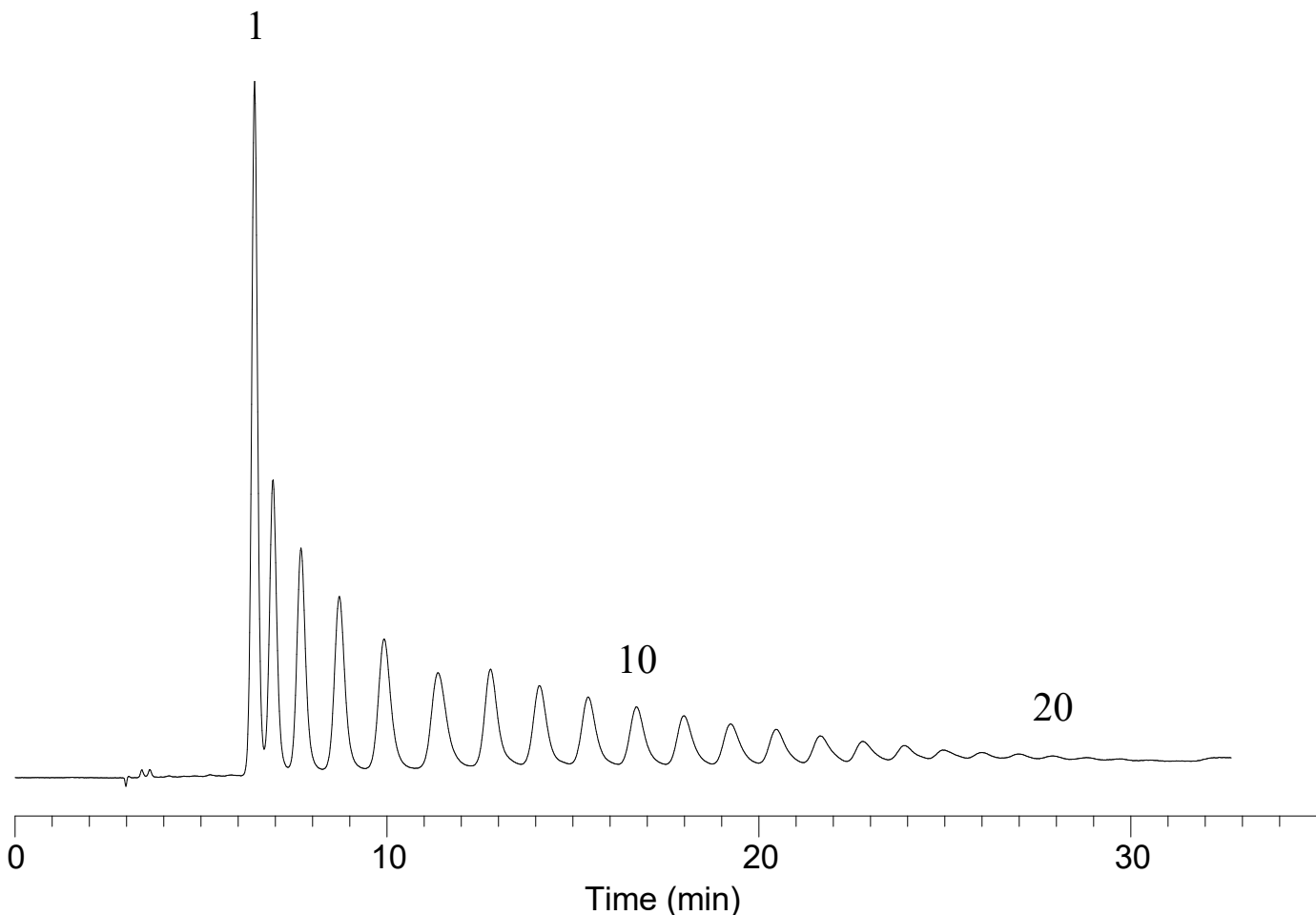


# InertSearch™ for LC

Inertsil® Applications

## Analysis of Glucose Oligomer

Data No. LA993-0812



### Conditions

**System** : LC700 system  
**Column** : InertSphere Sugar-1 (5 µm, 150 x 4.6 mm I.D.)  
**Column Cat. No.** : 5020-11001  
**Eluent** : A) 50 mM NaOH in H<sub>2</sub>O  
: B) 50 mM NaOH, 400 mM CH<sub>3</sub>COONa in H<sub>2</sub>O  
A/B = 88/12 – 30 min – 74/26, v/v  
**Flow rate** : 0.5 mL/min  
**Col. Temp.** : 25 °C  
**Detection** : ECD Pulse Mode (ED723, Gold)  
E1: 150 mV t1: 600 ms  
E2: -1500 mV t2: 50 ms  
E3: 600 mV t3: 50 ms  
E4: -200 mV t4: 100 ms  
ts: 50 ms

### Analyte:

Glucose Oligomer (1-20)

**Injection Vol.** : 10 µL  
**Sample** : Glucose Oligomer Standard