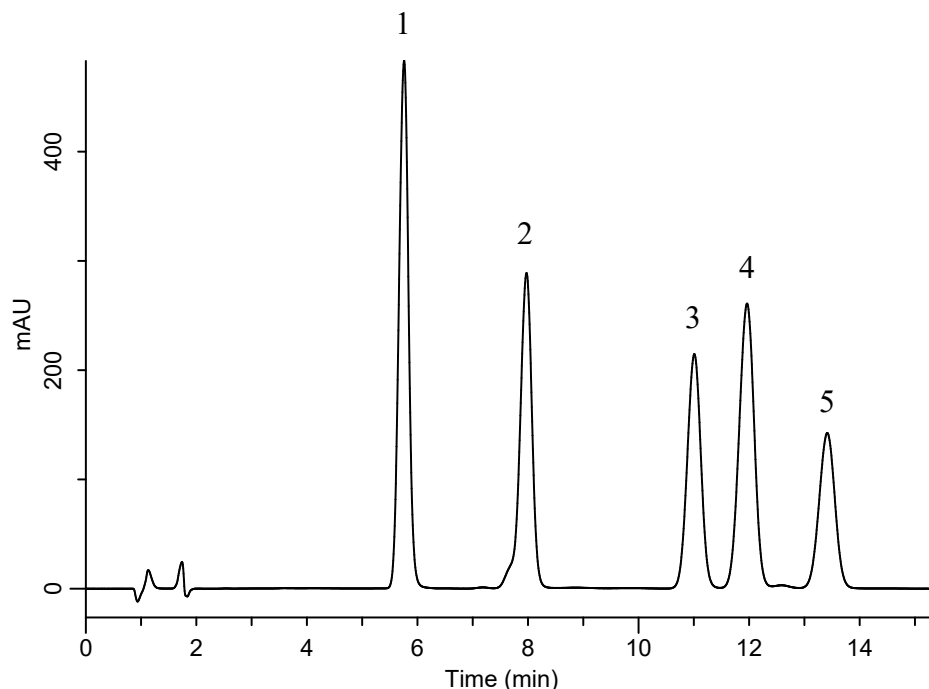


# InertSearch™ for LC

Inertsil® Applications

## Analysis of 5 kinds of Aldehydes (Directed by Pre-Column Method with DNPH)

Data No. LA998-0894



### Conditions

**System** : GL-7400 HPLC system  
**Column** : InertSustain C18 HP  
(3 $\mu$ m, 3.0 mm I.D.  $\times$  150 mm)  
**Column Cat. No.** : 5020-14425  
**Eluent** : A) CH<sub>3</sub>CN  
B) H<sub>2</sub>O  
C) THF  
A/B/C = 35/55/10, v/v/v  
**Flow Rate** : 0.6 mL/min  
**Col. Temp.** : 40 °C  
**Detection** : UV 360 nm (GL-7452 PDA Detector)  
**Injection Vol.** : 10  $\mu$ L  
**Sample** : DNPH-Aldehyde 5 mix Standard Solutions

### Analyte:

1. DNPH-Formaldehyde	10 mg/L
2. DNPH-Acetaldehyde	10 mg/L
3. DNPH-Acetone	10 mg/L
4. DNPH-Acrolein	10 mg/L
5. DNPH-Propionaldehyde	10 mg/L