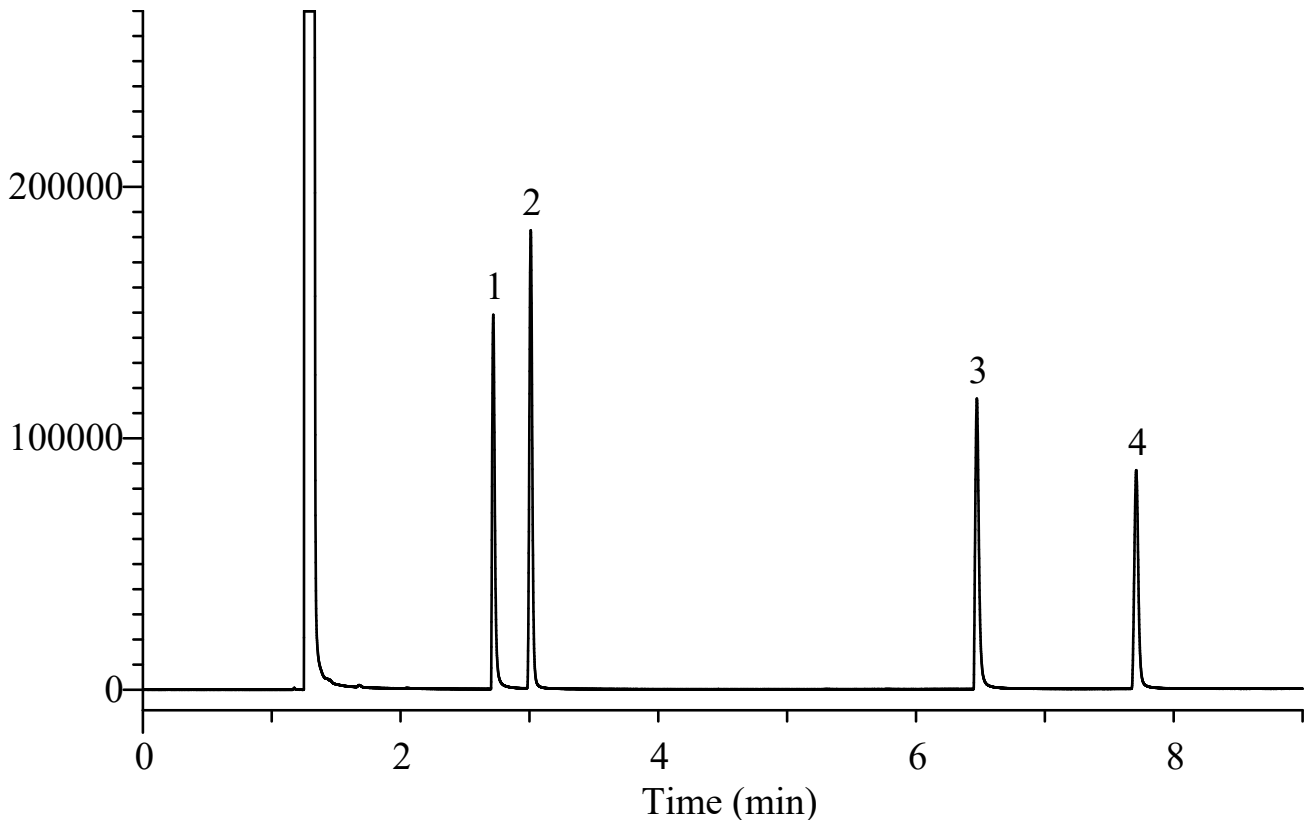


InertSearch™ for GC

InertCap® Applications

Glycols & Glycerine

Data No. GA100-0875



Conditions

System : GC/FID
Column : InertCap 1701
0.32 mm I.D. x 30 m df = 1.0 µm
Col. Cat. No. : 1010-61245
Col. Temp. : 100 °C (5 min hold) - 7.5 °C/min - 220 °C
Carrier Gas : He 100 kPa
Injection : Split flow 53.6 mL/min
220 °C
Detection : FID Range 10⁰
250 °C
Sample Size : 500 µg/mL in Methanol
1 µL

Analyte : 1. Ethylene glycol
2. Propylene glycol
3. Diethylene glycol
4. Glycerine

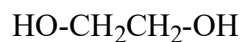
InertSearch™ for GC

InertCap® Applications

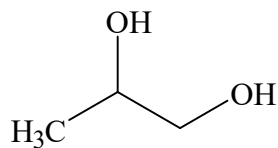
Glycols & Glycerine

Data No. GA100-0875

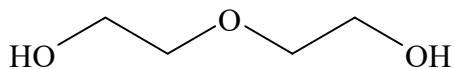
Chemical Structures



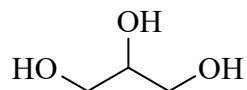
1. Ethylene glycol



2. Propylene glycol



3. Diethylene glycol



4. Glycerine

Structures are created using Chemistry 4-D Draw which is provided by ChemInnovation Software, Inc.