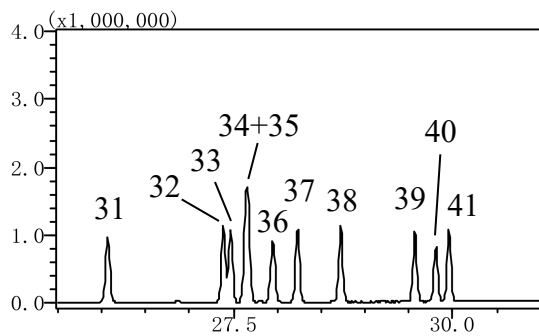
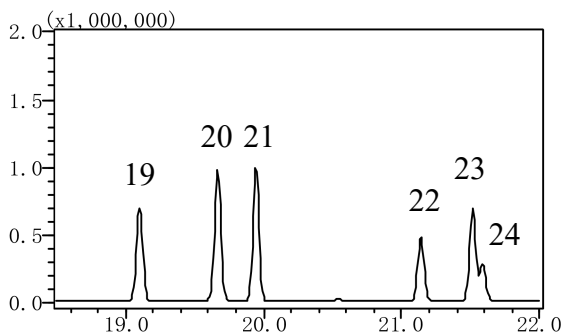
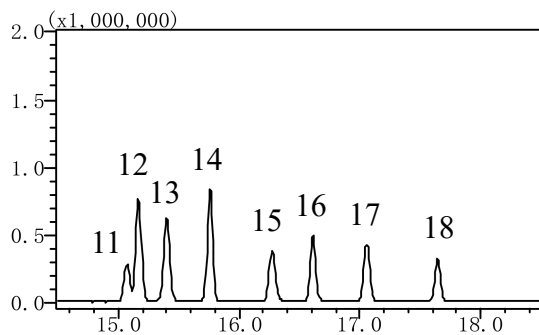
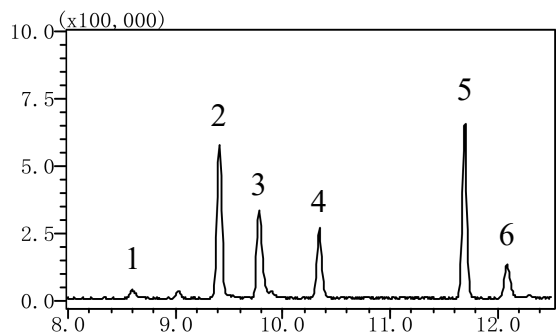
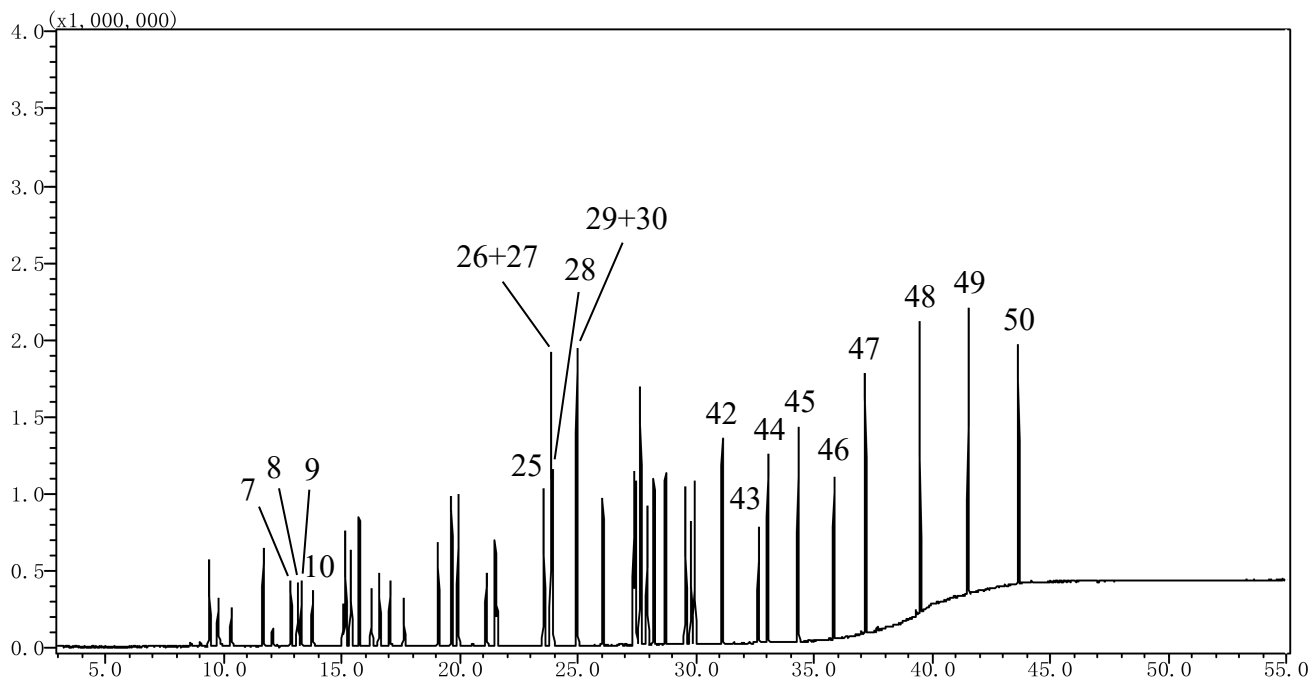


InertSearch™ for GC

InertCap® Applications

Indoor air

Data No. GA106-0644



InertSearch™ for GC

InertCap® Applications

Indoor air

Data No. GA106-0644

Conditions

System : GC/MS Thermal Desorption (T-DexII)
Column : InertCap 624
0.25 mm I.D. x 60 m df = 1.4 µm
Col. Cat. No. : 1010-14666
Col. Temp. : 40 °C (3 min hold) - 5 °C/min - 200 °C (0 min hold)
- 10 °C/min - 250 °C (18 min hold)
Carrier Gas : He 1mL/min
Injection : Thermal Desorption 270 °C 10 min
Split 1:5
Detection : MS SCAN (35 - 450 m/z)
Interface Temp. 260 °C
Sample Size : 100 µg/mL in Methanol / Water (95 / 5)
1 µL

Analyte :

| | |
|----------------------------------|--------------------------------|
| 1. Ethanol | 26. m-Xylene |
| 2. Acetone | 27. p-Xylene |
| 3. 2-Propanol(Isopropyl alcohol) | 28. n-Nonane |
| 4. Dichloromethane | 29. o-Xylene |
| 5. n-Hexane | 30. Styrene |
| 6. 1-Propanol | 31. α-Pinene |
| 7. 2,4-Dimethylpentane | 32. 4-Ethyltoluene |
| 8. 2-Butanone(MEK) | 33. 3-Ethyltoluene |
| 9. Ethyl acetate | 34. 1,3,5-Trimethylbenzene |
| 10. Chloroform | 35. n-Decane |
| 11. 1,2-Dichloroethane | 36. β-Pinene |
| 12. Benzene | 37. 2-Ethyltoluene |
| 13. 2,2,4-Trimethylpentane | 38. 1,2,4-Trimethylbenzene |
| 14. n-Heptane | 39. o-Xylene |
| 15. 1-Butanol | 40. Limonene |
| 16. Trichloroethylene | 41. 1,2,3-Trimethylbenzene |
| 17. 1,2-Dichloropropane | 42. n-Undecane |
| 18. Bromodichloromethane | 43. Nonanal |
| 19. 4-Methyl-2-pentanone (MIBK) | 44. 1,2,4,5-Tetramethylbenzene |
| 20. Toluene | 45. n-Dodecane |
| 21. n-Octane | 46. Decanal |
| 22. Tetrachloroethylene | 47. n-Tridecane |
| 23. n-Butyl acetate | 48. n-Tetradecane |
| 24. Dibromochloromethane | 49. n-Pentadecane |
| 25. Ethylbenzene | 50. n-Hexadecane |